



One Double Bedroom Apartment Peabody Road, Farnborough, GU14 6EY

Guide Price: £165,000

- One Double Bedroom
- First Floor Apartment
- Modern Fitted Kitchen
- Security Entry Phone System
- No Onward Chain
- Close to the Train Station
- Estimated Rental Price : £950 pcm
- EPC : E (52)



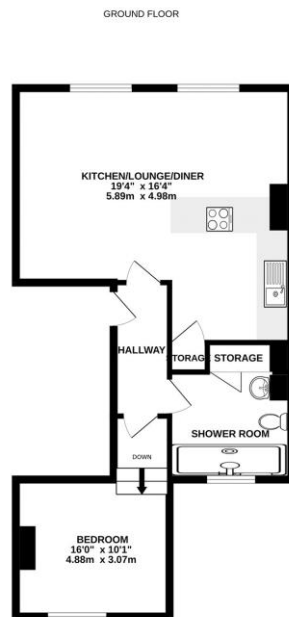
Description

Offered to the market, with no onward chain complications, is this one double bedroom first floor apartment situated in the popular North Camp area. The property is situated within easy reach of Local shops and transport links including North Camp train station. The property is accessed via communal doors with a security entry phone system. Once inside the apartment, there is an open plan lounge/dinner/kitchen. The modern fitted kitchen benefits from an integrated oven and hob, there is a modern shower room and a double bedroom.

Outside

To the rear of the building there is a communal bike store area.

Floorplan



While every attempt has been made to ensure the accuracy of the floorplan contained herein, measurements of floors, walls, doors and any other items are approximate and no responsibility is taken for any error or omission in this document. The user is to take all necessary precautions, and is advised to seek the aid of a professional practitioner. The fixtures, system and appliances shown have not been tested and no guarantee will be given regarding its reliability or efficiency. See the agent.



To arrange a viewing please contact:

Tel: 01252 361550

Email: info@bridges.co.uk

Important Notice - These particulars are set out as a general outline only for the guidance of intended purchasers and do not form part of any offer or contract and must not be relied upon as statements or representations of fact. Purchasers must satisfy themselves by inspection or otherwise as to their correctness.