



## Two Bedroom Mobile Home

**Chilton Farm Park, Fleet Road, Farnborough, GU14 9SJ**

Guide Price: £130,000

- Two Bedrooms
- 24ft x 20ft Park Home
- Popular Chilton Farm Park
- Only 50's Site
- Residents Parking
- Mains Gas and Services
- Close to Amenities
- Side and Rear Garden



## Description

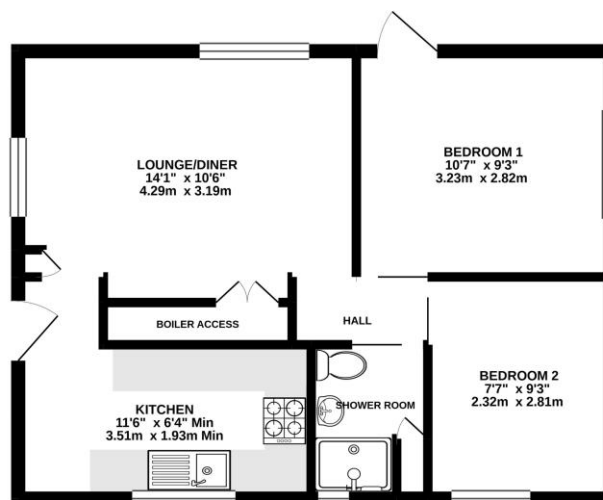
Located in the popular Chilton Farm Park static home site, is this St Omar Homes built park home, which is a double unit. Benefitting from two bedrooms, lounge/diner, shower room and good size fitted kitchen. Other benefits include mains gas supply and services, double glazed windows and your own private garden to the rear and side of the home. The over 50's age restriction gives peace of mind to owners of mature like minded neighbours. It also benefits from being situated close to local amenities and bus routes for non drivers.

## Outside

The garden is enclosed to the side and rear with wooden fencing and is mainly laid to lawn. There is a residents car park on the site also.

## Floorplan

GROUND FLOOR



While every attempt has been made to ensure the accuracy of the floorplan contained here, measurements of doors, windows, rooms and any other items are approximate and no responsibility is taken for any errors, omissions or mis-statements. This plan is for illustrative purposes only and should not be used for any prospective purchase. The services, systems and appliances shown have not been tested and no guarantee is given in their availability or efficiency on the ground.  
Made with Metropac 03/07



To arrange a viewing please contact:

Tel: 01252 361550

Email: [info@bridges.co.uk](mailto:info@bridges.co.uk)

Important Notice - These particulars are set out as a general outline only for the guidance of intended purchasers and do not form part of any offer or contract and must not be relied upon as statements or representations of fact. Purchasers must satisfy themselves by inspection or otherwise as to their correctness.