



One Double Bedroom Maisonette

Robin Hood Close, Farnborough, Hampshire, GU14 8TN

Price: £165,000

- One Double Bedroom
- Ground Floor Apartment
- Close to Train Station
- Ample Storage
- Garage
- Ideal Investment or First Time Buy
- Estimated Rental Price : £875 pcm
- EPC : C (73)



Description

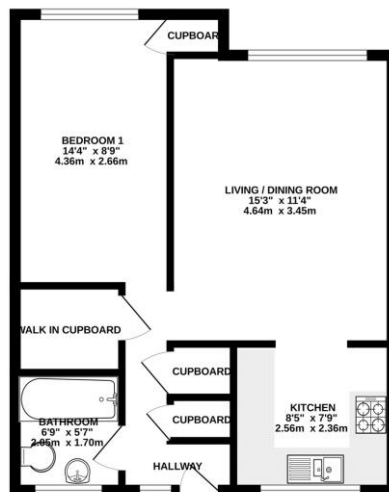
Offered to the market in a well regarded location close to Cove Brook is this one bedroom ground floor apartment. Upon entering there is a spacious entrance hall with three well sized storage cupboards, there is a three piece bathroom suite, double bedroom with built in storage, a living/dining room and separate kitchen. The property would make an ideal investment, first time buy or investment opportunity.

Outside

Externally there is well kept communal areas and a garage.

Floorplan

GROUND FLOOR



While every attempt has been made to ensure the accuracy of the floorplan contained herein, measurements of areas, volumes, heights and other physical data are approximate and no responsibility is taken for any error, omission or misstatement. This plan is for illustrative purposes only and should not be used as a guide for any prospective purchaser. The services, fixtures and appliances shown herein are not to be taken as a guarantee and are to be taken as a reference only to the plan.
Made with Metropack (2022) 10/2022



To arrange a viewing please contact:

Tel: 01252 361550

Email: info@bridges.co.uk

Important Notice - These particulars are set out as a general outline only for the guidance of intended purchasers and do not form part of any offer or contract and must not be relied upon as statements or representations of fact. Purchasers must satisfy themselves by inspection or otherwise as to their correctness.