



Two Bedroom Apartment

Meadow Court, Anchor Meadow, Farnborough, Hampshire, GU14

Guide Price: £190,000

- Two Double Bedrooms
- First Floor Apartment
- Close to Town Centre and Station
- Close to Local Amenities
- Double Glazed
- No Onward Chain
- Estimated Rental Price £1,100 pcm
- EPC : E (39)



Description

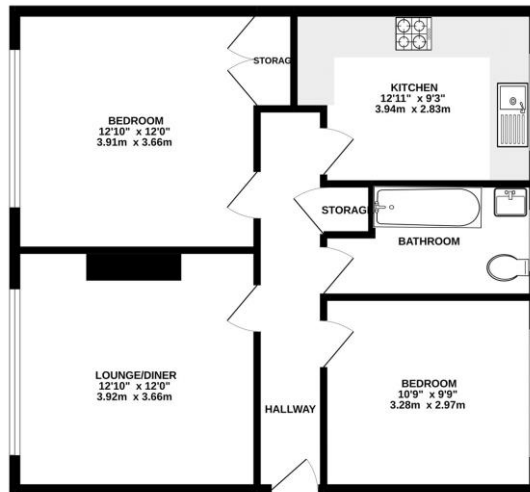
Situated in Cove village is this two bedroom first floor apartment offered to the market in good condition throughout and being sold with no onward chain complications. Internally the property benefits form a refitted kitchen/breakfast room, a separate lounge/diner, two bedrooms one with fitted storage and a refitted three piece bathroom suite. Viewings recommended!

Outside

Externally the property benefits from well kept communal grounds which are mainly laid to lawn.

Floorplan

GROUND FLOOR



While every attempt has been made to ensure the accuracy of the floorplan contained herein, measurements of floors, walls, ceilings and any other items are approximate and no responsibility is taken for any error or omission in the floorplan. The user is advised to check the measurements and to satisfy themselves as to their correctness. The services, systems and appliances shown have not been tested and no guarantee is given as to their operation or performance. Made with Metaplan 12/02/22



To arrange a viewing please contact:

Tel: 01252 361550

Email: info@bridges.co.uk

Important Notice - These particulars are set out as a general outline only for the guidance of intended purchasers and do not form part of any offer or contract and must not be relied upon as statements or representations of fact. Purchasers must satisfy themselves by inspection or otherwise as to their correctness.