



Two Bedroom Terraced House

Cromwell Way, Farnborough, Hampshire, GU14 8LN

Asking Price: £330,000

- Two Bedrooms
- Mid Terrace Home
- Close to Local Amenities
- Easy Access to Town Centre
- Private Garden
- Driveway Parking
- Viewing Advised
- EPC : E (48)



Description

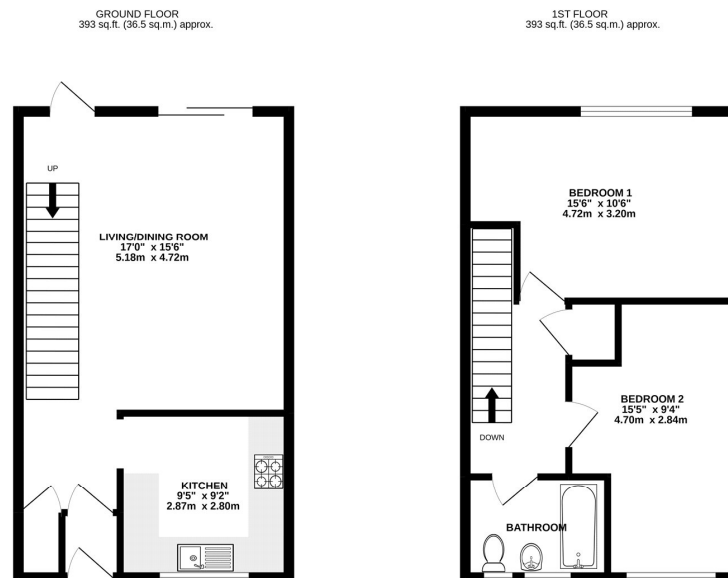
Tucked away within a small popular development which offers easy access to the A331/M3 and local shops, is this well presented two double bedroom mid terrace home.

The property offers a modern fitted kitchen/breakfast room, 17ft living/dining room, modern fitted bathroom and two double bedrooms. There is also driveway parking and a low maintenance rear garden. This property is an ideal first time buy or investment purchase.

Outside

Externally, this property benefits from a private enclosed rear garden whilst also offering driveway parking to the front.

Floorplan



TOTAL FLOOR AREA: 786 sq.ft. (73.0 sq.m.) approx.
Whilst every attempt has been made to ensure the accuracy of the floorplan contained herein, measurements of doors, windows, rooms and any other items are approximate and no responsibility is taken for any errors, omissions or mis-statements. This plan is for illustrative purposes only and should be used as such for any prospective purchaser. The services, systems and appliances shown have not been tested and no guarantee as to their operability or efficiency can be given.
 Made with Metropix ©2022



To arrange a viewing please contact:

Tel: 01252 361550

Email: info@bridges.co.uk

Important Notice - These particulars are set out as a general outline only for the guidance of intended purchasers and do not form part of any offer or contract and must not be relied upon as statements or representations of fact. Purchasers must satisfy themselves by inspection or otherwise as to their correctness.