



Four Bedroom Town House

Woodland Walk, Aldershot, Hampshire, GU12 4FY

Price: £450,000

- Four Double Bedrooms
- Two Bathrooms and a Downstairs Cloakroom
- A Simply Stunning Kitchen
- A Garage and Parking
- Immaculately Presented Throughout
- Enrich Your Life with a Stunning Home
- Idyllic Landscaped Rear Garden
- EPC: TBC



Description

Situated on the fringes of the popular 'Woodland Walk' development, set over three floors and with internal accommodation presented in an exceptional order throughout. The property benefits from four bedrooms and a stunning kitchen, as well as allocated parking and a garage. The ground floor boasts a welcoming entrance hall leading you to a reception room or the fourth bedroom. The kitchen is at the rear of the property, which is the heart of this family home, overlooking the recently landscaped rear garden. Stairs lead up to the first floor, offering a lounge with dual aspect windows, along with a bedroom. Further stairs lead up to the second floor with a principal bedroom, featuring an en suite, a further double bedroom and a family bathroom.

The property offers versatile family living options, all being offered with contemporary and modern living. This family home has been the subject of many improvements by the current owners, which can be seen in abundance. The property further benefits from a secluded landscaped garden, with driveway parking and a garage. Located just 1.1 miles from the train station, which offers direct links to London Waterloo, this exceptional family home is also within walking distance of popular schools and picturesque walks.

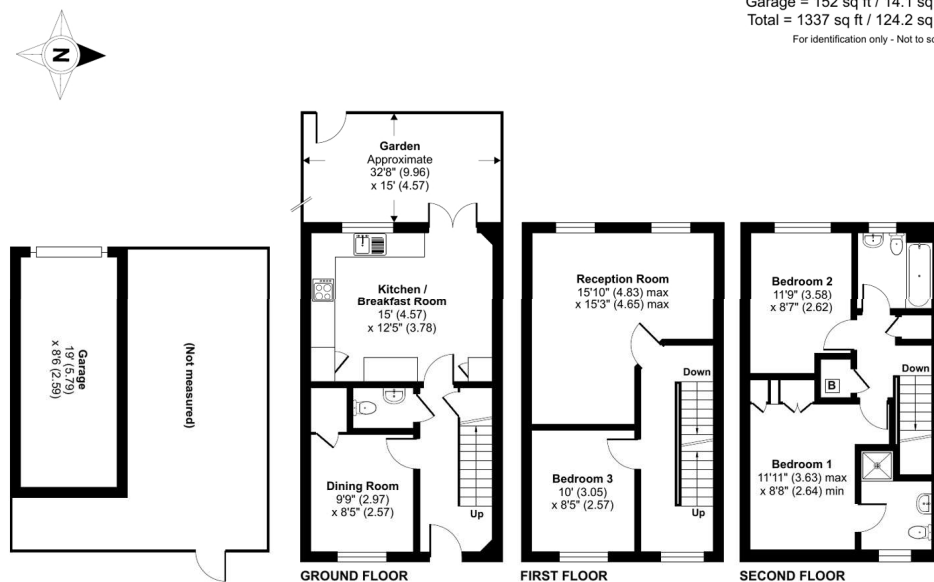
Outside

The property offers an attractive rear garden incorporating an area of lawn and patio perfect for entertaining, which is enclosed by wooden fencing. The garden provides a good degree of privacy and seclusion, with established plants and shrubs, with the additional benefit of a garage and parking.

Floorplan

Woodland Walk, Aldershot, GU12

Approximate Area = 1185 sq ft / 110.1 sq m
 Garage = 152 sq ft / 14.1 sq m
 Total = 1337 sq ft / 124.2 sq m
For identification only - Not to scale



Floor plan produced in accordance with RICS Property Measurement Standards incorporating International Property Measurement Standards (IPMS2 Residential). ©victorcom 2024. Produced for Bridges Estate Agents. REF: 1174880



To arrange a viewing please contact:

Tel: 01252 361550

Email: info@bridges.co.uk

Important Notice - These particulars are set out as a general outline only for the guidance of intended purchasers and do not form part of any offer or contract and must not be relied upon as statements or representations of fact. Purchasers must satisfy themselves by inspection or otherwise as to their correctness.