

Two Bedroom Ground Floor Flat/Apartment

Grosvenor Mansions, Sullivan Road, Camberley, Surrey, GU15 3BF

Price: £335,000

- Two Double Bedrooms
- Luxury Ground Floor Apartment
- Open Plan Kitchen/Living Room
- En Suite Shower Room
- Gated Development
- Private Enclosed Garden
- Stunning Condition
- EPC : C (80)



Description

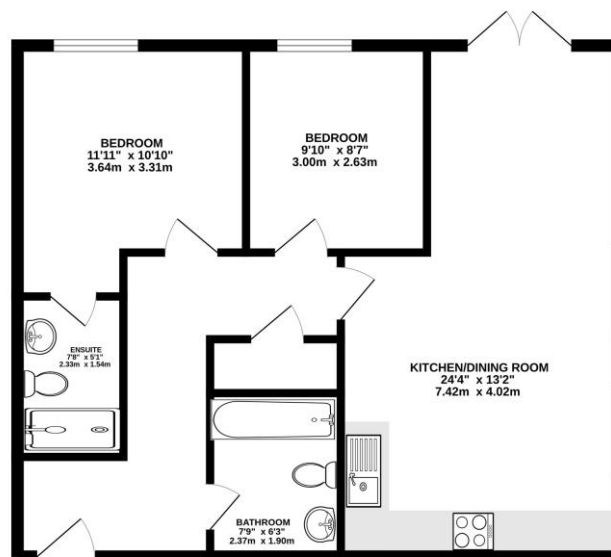
Situated within a gated development this stunning ground floor luxury apartment boasts close proximity to Camberley Town Centre. Comprising of an entrance hall, open plan kitchen/living room with access to its own garden, two double bedrooms, en suite shower room and family bathroom.

Outside

The property also has its own enclosed garden with laid to patio and offering a sunny aspect. There is also allocated parking.

Floorplan

GROUND FLOOR



Whilst every attempt has been made to ensure the accuracy of the floorplan contained herein, measurements of doors, windows, rooms and any other items are approximate and the responsibility is taken for any error, omission or misstatement. This plan is for illustrative purposes only and should be used as such by any prospective purchaser. The services, fixtures and appliances shown have not been tested and no guarantee is given for their condition or fitness for use. Made with floorplan 11/2023



To arrange a viewing please contact:

Tel: 01252 361550

Email: info@bridges.co.uk

Important Notice - These particulars are set out as a general outline only for the guidance of intended purchasers and do not form part of any offer or contract and must not be relied upon as statements or representations of fact. Purchasers must satisfy themselves by inspection or otherwise as to their correctness.