

Four Bedroom Terraced House

Rectory Road, Farnborough, Hampshire, GU14 7HU

Offers in Excess of: £375,000

- Four Bedrooms
- Terraced House
- Open Fireplace
- Westerly Aspect Garden
- Edwardian Style
- Spacious Layout
- Popular Location
- EPC : TBC



Description

A striking Edwardian family home situated in a popular location within easy access to Farnborough Main and Farnborough North train stations, and the town centre.

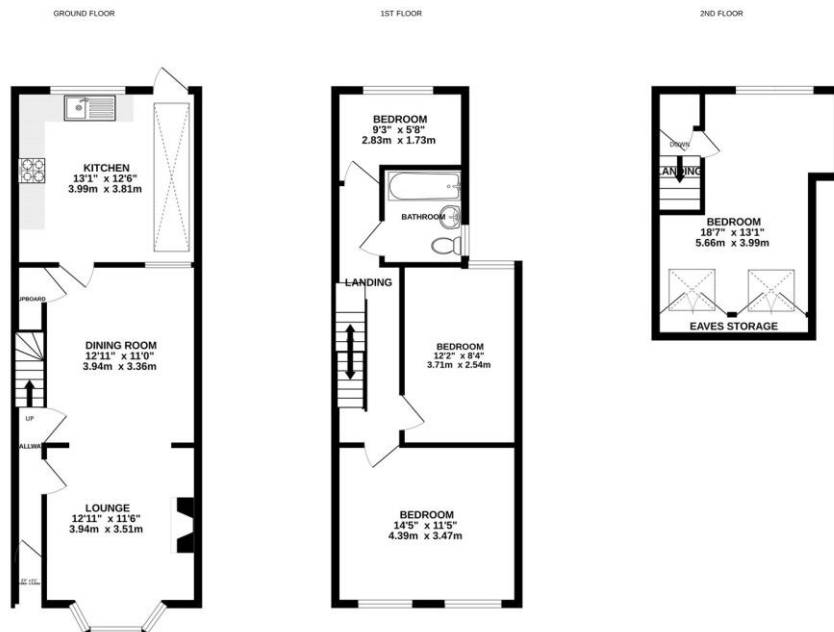
Set over three floors the property retains some refreshing character features throughout such as wood flooring, an open fireplace, and stylish bay windows.

On the ground floor the property offers a separate living room, a dining room, and a kitchen all tastefully designed and offering a generous amount of space.

Outside

To the front, the property has a walled garden leading up to the entrance. The westerly aspect rear garden is well proportioned and non overlooked, offering a perfect space for the family.

Floorplan



Whilst every attempt has been made to ensure the accuracy of the floorplan contained here, measurements of doors, windows, rooms and any other items are approximate and no responsibility is taken for any error, omission or mis-statement. This plan is for illustrative purposes only and should be used as such by any prospective purchaser. The services, systems and appliances shown have not been tested and no guarantee as to their operability or efficiency can be given. Made with Metropac ©2024.



TO ARRANGE A VIEWING PLEASE CONTACT:
Tel: **01252 361550** or Email: info@bridges.co.uk



Important Notice - These particulars are set out as a general outline only for the guidance of intended purchasers/tenants and do not form part of any offer or contract and must not be relied upon as statements or representations of fact. Purchasers/Tenants must satisfy themselves by inspection or otherwise as to their correctness.