

Four Bedroom End of Terrace House

Guildford Road, Aldershot, Hampshire, GU12 4BN

Price: £540,000

- Four Bedrooms
- Two Reception Room
- Bi Fold Door
- Open Plan Kitchen/Dining Room
- Garage and Office/Workshop
- Versatile Family Living Options
- Landscaped Rear Garden
- EPC: D (66)



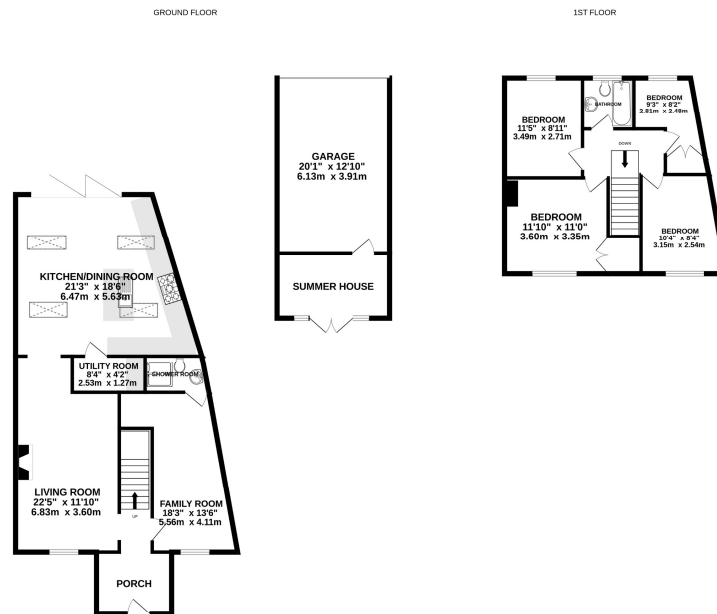
Description

A stunning end of terrace family home, positioned in a sought after location. With the internal accommodation presented in an exceptional order throughout. The property benefits from four bedrooms, two reception rooms as well as a stunning kitchen with Bi fold doors, further featuring a downstairs shower room & a utility room. The ground floor boasts a welcoming entrance hall which leads you to either, the main lounge or family room that leads through to the open plan fitted kitchen/dining room. The first floor offers four bedrooms, three being generous doubles and a modern family bathroom.

Outside

The recently landscaped rear garden leads to an office/workshop and garage. Further benefits include a large patio space for entertaining.

Floorplan



While every attempt has been made to ensure the accuracy of the floorplan, contractors' measurements of doors, windows, rooms and any other items are approximate and no responsibility is taken for any error, omission or misstatement. This plan is for illustrative purposes only and should be used as a guide only and prospective purchasers. The services, systems and appliances shown have not been tested and no guarantee as to their operability or efficiency can be given. Made with Metroplan 02023



To arrange a viewing please contact:

Tel: 01252 361550

Email: info@bridges.co.uk

Important Notice - These particulars are set out as a general outline only for the guidance of intended purchasers and do not form part of any offer or contract and must not be relied upon as statements or representations of fact. Purchasers must satisfy themselves by inspection or otherwise as to their correctness.