



One Double Bedroom Maisonette

Morval Close, Farnborough, Hampshire, GU14 0JF

Guide Price: £200,000

- One Double Bedroom
- First Floor Maisonette
- Living/Dining Room
- Residents and Visitors Parking
- Small Popular Development
- No Onward Chain
- Estimated Rental Price : £1,000 pcm
- EPC : D (62)



Description

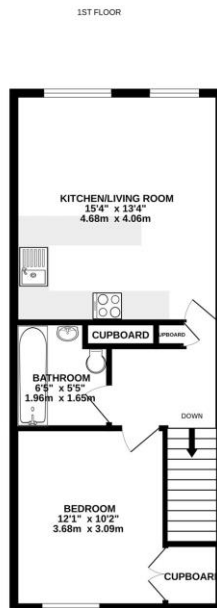
Offered to the market with no onward chain is this one bedroom maisonette. This property is in a popular area within easy reach of local amenities, parks, road links, and Farnborough's main train station is approximately one mile away. Internally, the property benefits from a kitchen/living room, a double bedroom with built in storage, and a three piece bathroom suite. The property also benefits from resident parking.

This maisonette is an ideal first time or investment purchase. Viewings are highly recommended to appreciate in the property in full.

Outside

To the front of the property is a small garden which is mainly laid to lawn with a central path, plus a gravel area leading to the parking.

Floorplan



While every attempt has been made to ensure the accuracy of the floorplan contained herein, measurements of floors, walls, doors and any other items are approximate and no responsibility is taken for any errors or omissions in the floorplan. The plan is for illustrative purposes only and should not be used as a guarantee of any kind. Measurements are shown in millimetres and rounded to the nearest millimetre.
Made with ArchiCAD 2022



To arrange a viewing please contact:

Tel: 01252 361550

Email: info@bridges.co.uk

Important Notice - These particulars are set out as a general outline only for the guidance of intended purchasers and do not form part of any offer or contract and must not be relied upon as statements or representations of fact. Purchasers must satisfy themselves by inspection or otherwise as to their correctness.