



Two Double Bedroom Terraced House

Ravenscroft, Hook, Hampshire, RG27 9NP

Price: £335,000

- Two Double Bedrooms
- Refitted Kitchen
- Modern Fitted Bathroom
- Views of Hartlett's Park
- Residents Parking
- Close to Amenties
- No Onward Chain
- EPC : C (72)



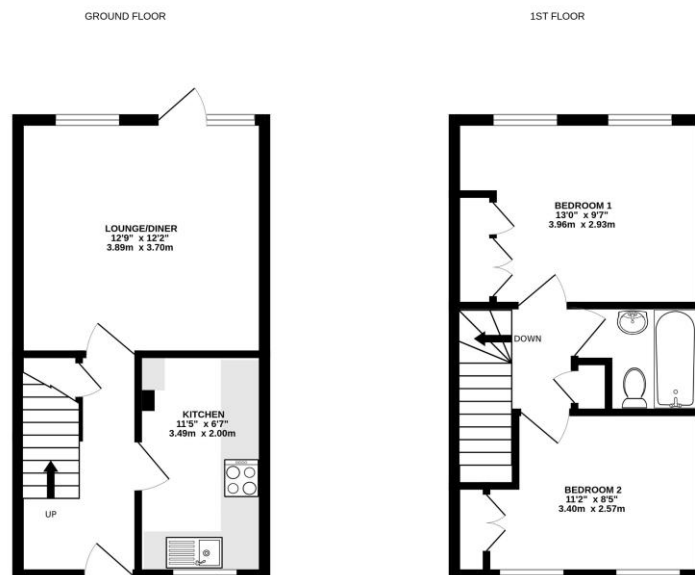
Description

This two bedroom staggered terrace home is available with no onward chain and is situated with a lovely backdrop onto Hartletts Park, offering scenic views from Bedroom One. Both bedrooms are double sized and come with fitted wardrobes, featuring twin windows that make them bright and airy. The property boasts a modern, refitted kitchen with quartz worktops, a halogen hob, and a built in fan assisted electric oven, there is also a refitted bathroom with a shower over the bath. The lounge/diner opens out to a private rear garden. Additional benefits include an upgraded central heating boiler, UPVC double glazed windows, and a traffic free location. Conveniently located, the home is just a short distance from the centre of Hook and the mainline railway station.

Outside

The rear garden, approximately 40 feet long, adjoins a wooded area and Hartletts Park, ensuring a high degree of privacy. It features a rear gate leading to a walkway, wooden fencing for enclosure, a shed, a paved patio area, and a pathway leading to the garden's end. The remainder of the garden is laid to lawn with flower and shrub borders. At the front, the property has a partially lawned area with a flowerbed by the kitchen window and a central pathway to the front door, along with an additional storage cupboard.

Floorplan



To arrange a viewing please contact:

Tel: 01256 769999

Email: info@bridges.co.uk

Important Notice - These particulars are set out as a general outline only for the guidance of intended purchasers and do not form part of any offer or contract and must not be relied upon as statements or representations of fact. Purchasers must satisfy themselves by inspection or otherwise as to their correctness.