



Four Bedroom Detached House

Knoll Road, Fleet, Hampshire, GU51 4PR

Price: £730,000

- Four Bedrooms
- Detached Family Home
- Open Plan Kitchen/Breakfast room
- Four Reception Rooms
- Annex Potential
- 'Blue Triangle' Location
- Walking Distance to Fleet Station
- EPC : D (57)



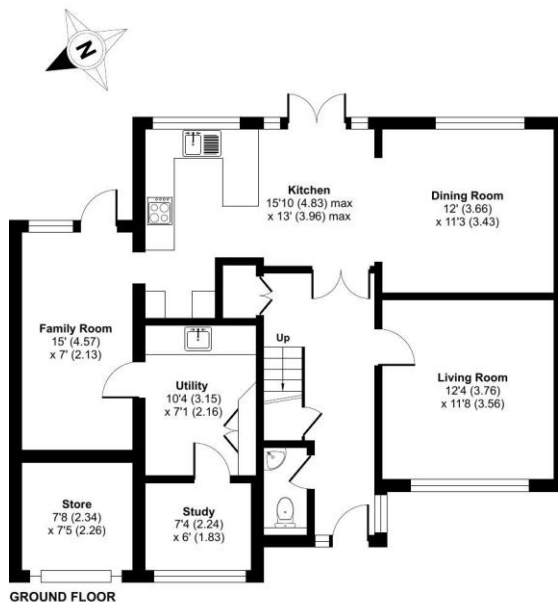
Description

A simply stunning four bedroom detached family home situated within the prestigious 'Blue Triangle' area of Fleet and close to local amenities. The property has been modernised throughout by the current vendors in recent years and still offers scope to extend subject to the usual planning requirements. The accommodation comprises an entrance hall, cloakroom, living room, an open plan kitchen/breakfast/dining room, family room, study room, utility room and a garage/store on the ground floor. While the first floor offers four well proportioned bedrooms and a refitted four piece family bathroom. Other benefits include a generous southeasterly facing garden as well as being situated close to Fleet mainline station. Viewings are highly recommended and strictly by appointment only.

Outside

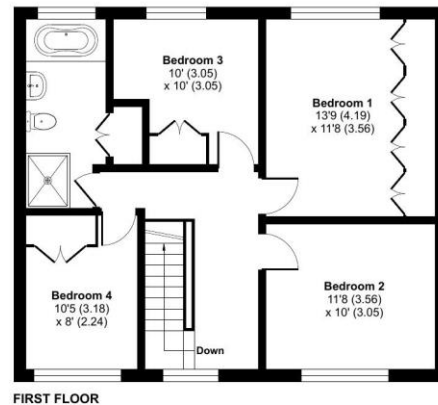
The property offers driveway parking for multiple vehicles with side access leading to the enclosed rear garden, which has been landscaped to provide an artificial lawn and raised decked seating area along with space to the side providing scope to extend subject to the usual planning requirements.

Floorplan



Knoll Road, Fleet, Hampshire, GU51

Approximate Area = 1562 sq ft / 145.1 sq m
 Store = 57 sq ft / 5.2 sq m
 Total = 1619 sq ft / 150.3 sq m
 For identification only - Not to scale



Floor plan produced in accordance with RICS Property Measurement Standards incorporating International Property Measurement Standards (IPMS2 Residential).



To arrange a viewing please contact:

Tel: 01252 361550

Email: info@bridges.co.uk

Important Notice - These particulars are set out as a general outline only for the guidance of intended purchasers and do not form part of any offer or contract and must not be relied upon as statements or representations of fact. Purchasers must satisfy themselves by inspection or otherwise as to their correctness.