

## Three Bedroom Semi-Detached House Young Way, Wellesley, Aldershot, GU11 4BW

Offers Over: £475,000

- Three Bedrooms
- Simply Stunning Family Home
- Versatile Living Options
- Driveway Parking and a Garage
- Study and Downstairs Cloakroom
- Must be Seen
- Immaculately Presented Throughout
- EPC: B (85)



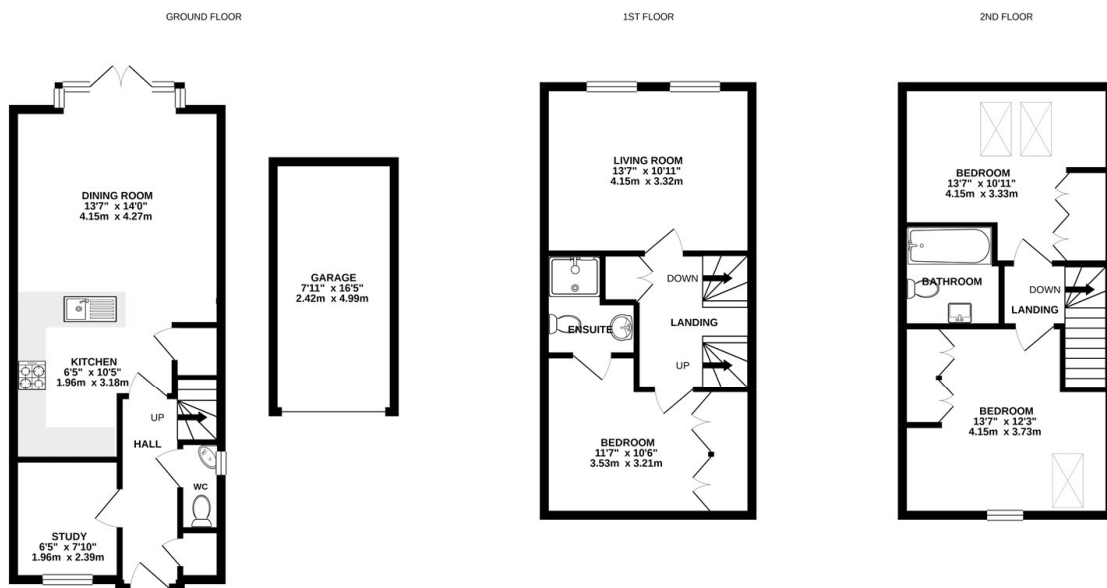
## Description

Wellesley is an exciting development in Rushmoor, located in a beautiful part of North East Hampshire, within easy reach to both the countryside and London. Upon entering the property, you are greeted by a light and airy entrance hall with stylish flooring throughout. The integrated kitchen is high gloss with bespoke tiling, leading to a generously sized dining area or family room - as well as patio doors opening onto the recently landscaped rear garden. The first floor accommodation offers a principal bedroom with an en suite, an additional reception room or fourth bedroom. The second floor boasts a further two double bedrooms with bespoke wardrobes with a further family bathroom. This property further benefits for a downstairs cloakroom, a study, driveway parking for multiple vehicles and a garage. Bridges are delighted to offer this fabulous family home to the market and highly recommend viewing.

## Outside

To the rear of the property is an enclosed garden mainly laid to lawn with herbaceous borders, and trees. To the side of the property is a block paved drive with a garage.

## Floorplan



Whilst every attempt has been made to ensure the accuracy of the floorplan contained here, measurements of doors, windows, rooms and any other items are approximate and no responsibility is taken for any error, omission or mis-statement. This plan is for illustrative purposes only and should be used as such by any prospective purchaser. The services, systems and appliances shown have not been tested and no guarantee as to their operability or efficiency can be given.  
Made with Metropix ©2021



To arrange a viewing please contact:

Tel: 01252 361550

Email: [info@bridges.co.uk](mailto:info@bridges.co.uk)

Important Notice - These particulars are set out as a general outline only for the guidance of intended purchasers and do not form part of any offer or contract and must not be relied upon as statements or representations of fact. Purchasers must satisfy themselves by inspection or otherwise as to their correctness.