



Three Bedroom Detached Bungalow

Shawfield Road, Ash, Surrey, GU12 6SQ

Price: £550,000

- Detached
- Kitchen/Breakfast Room
- Driveway Parking for Multiple Vehicles
- Beautiful Private Garden
- Walking Distance to the Local Amenities
- Two Bathrooms
- Walking Distance to Ash Rail Station
- EPC: D (58)



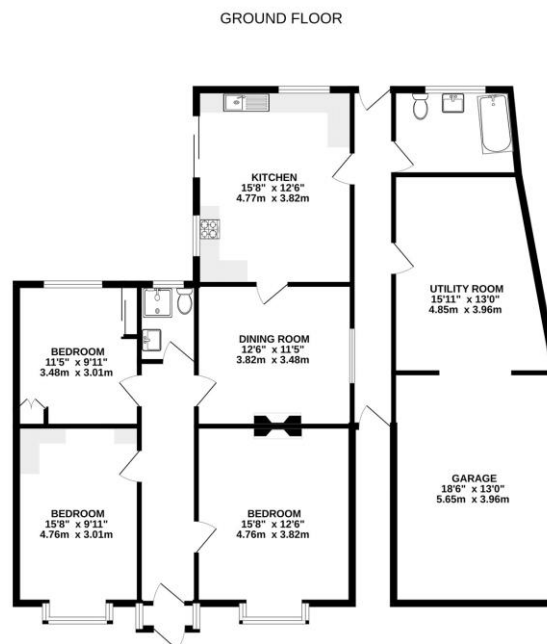
Description

****NO CHAIN**** Only minutes' walk from the local amenities, and located in the heart of the village, is this spacious detached bungalow. The bungalow offers a wealth of space throughout and is also set on a generous plot. The property boasts a living room and a kitchen/breakfast room - with plenty of cupboard and work-top space, as well as access into the garden. You will also find a large second reception room, a utility room, bathroom and shower-room. There is also three double bedrooms, with bedroom one benefitting from built-in storage.

Outside

Outside boasts a beautiful private rear garden, a front garden and driveway parking for a number of vehicles.

Floorplan



Whilst every attempt has been made to ensure the accuracy of the floorplan contained here, measurements of plans, drawings, views and any other data are approximate and no responsibility is taken for any error, omission or misstatement. This plan is for illustrative purposes only and should not be used as a basis for prospective purchase. The services, systems and appliances shown have not been tested and no guarantee can be given regarding their operation.

Bridges
.co.uk

the
hub

To arrange a viewing please contact:

Tel: 01252 361550

Email: info@bridges.co.uk

Important Notice - These particulars are set out as a general outline only for the guidance of intended purchasers and do not form part of any offer or contract and must not be relied upon as statements or representations of fact. Purchasers must satisfy themselves by inspection or otherwise as to their correctness.