



Four Bedroom House

Turners Avenue, Fleet, GU51 1DU

Guide Price: £500,000

- Four Bedrooms
- Elvetham Heath Development
- Balcony
- Garage and Parking
- Enclosed Garden
- En Suite
- Viewing Advised
- EPC : C (74)



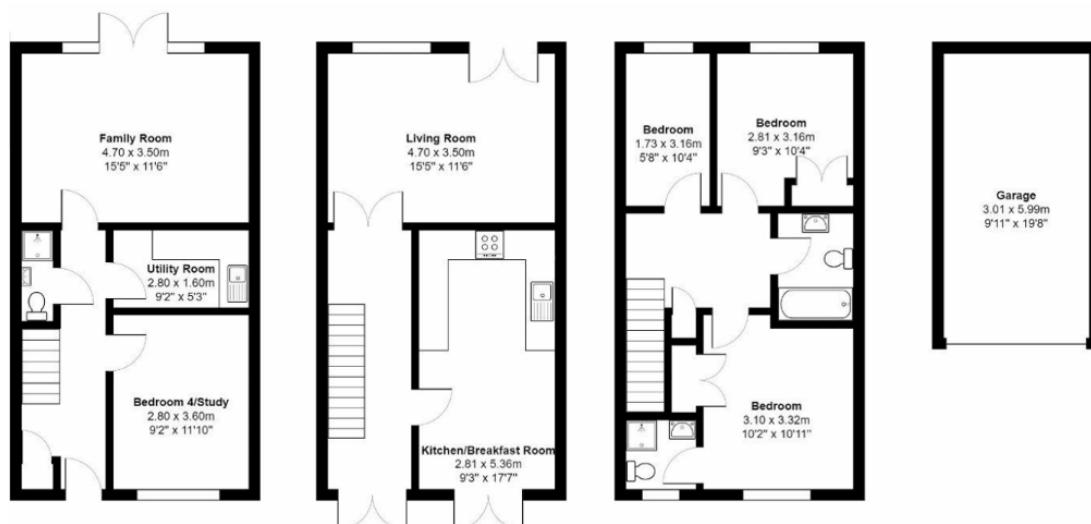
Description

A delightful four bedroom town house situated within the popular Elvetham Heath development, within catchment of sought after local schools and offered to the market in good decorative order throughout. The property offers flexible and versatile living accommodation across three floors including an entrance hall, study/bedroom, shower room and a family room on the ground floor. The first floor offers a living/dining room with a Juliet balcony overlooking the rear garden, a modern kitchen/breakfast room, and a covered balcony to the front with an attractive street view. While the second floor provides the remaining three bedrooms, an en suite shower room, and a family bathroom.

Outside

The property benefits from both front and rear gardens, the rear garden offers a patio area and a further decked seating area with the remainder being laid to lawn. There is a garage and parking area accessed via the rear garden gate.

Floorplan



To arrange a viewing please contact:

Tel: 01252 361550

Email: info@bridges.co.uk

Important Notice - These particulars are set out as a general outline only for the guidance of intended purchasers and do not form part of any offer or contract and must not be relied upon as statements or representations of fact. Purchasers must satisfy themselves by inspection or otherwise as to their correctness.