



Three Bedroom Detached Bungalow

Ash Green Lane East, Ash Green, Surrey, GU12 6JA

Price: £650,000

- Detached Three Bedroom Bungalow
- Garage
- Driveway for Multiple Vehicles
- Ash Green Village Location
- Walking Distance to Rail Station
- Generous Plot
- Quiet No Through Road Location
- EPC: TBC



Description

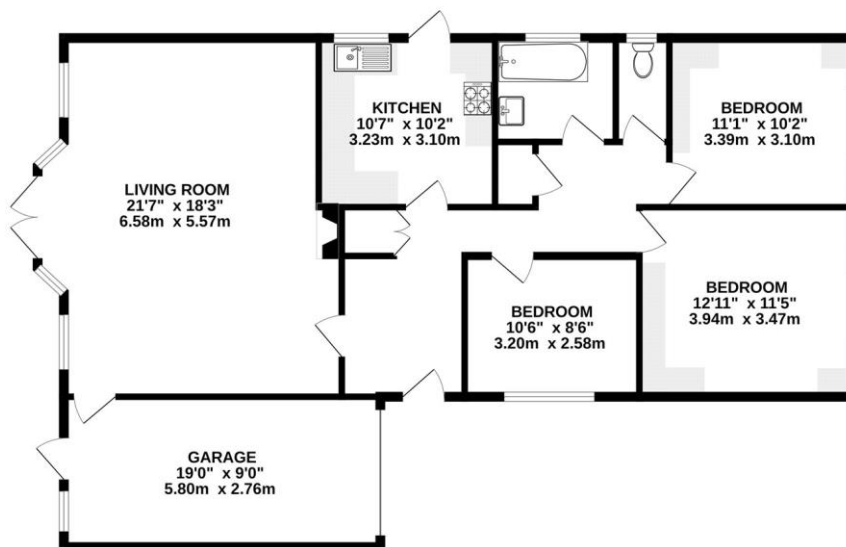
Located within a premium road in Ash Green village is this spacious three bedroom detached bungalow. Boasting three good size bedrooms alongside a large living room, with pleasant views into the garden. You will also find a kitchen/breakfast room with plenty of cupboard and work-top space, a bathroom suite and separate cloakroom. The bungalow also benefits from having an integral garage which you can access via the living room.

Outside

Outside boasts a garage, driveway parking for multiple vehicles, and a beautiful private and enclosed garden.

Floorplan

GROUND FLOOR



Whilst every attempt has been made to ensure the accuracy of the floorplan contained here, measurements of doors, windows, rooms and any other items are approximate and no responsibility is taken for any error, omission or mis-statement. This plan is for illustrative purposes only and should be used as such by any prospective purchaser. The services, systems and appliances shown have not been tested and no guarantee as to their operability or efficiency can be given.
Made with Memphis 02024



To arrange a viewing please contact:

Tel: 01252 361550

Email: info@bridges.co.uk

Important Notice - These particulars are set out as a general outline only for the guidance of intended purchasers and do not form part of any offer or contract and must not be relied upon as statements or representations of fact. Purchasers must satisfy themselves by inspection or otherwise as to their correctness.