

Three Bedroom End of Terrace House

Woodroffe Close, Ash, Surrey, GU12 6FS

Offers in excess of: £550,000

- Three Bedrooms
- Three En Suites
- Solar Panels
- Superb Condition
- Stunning Kitchen
- Landscaped Garden
- No Chain
- EPC: B (89)



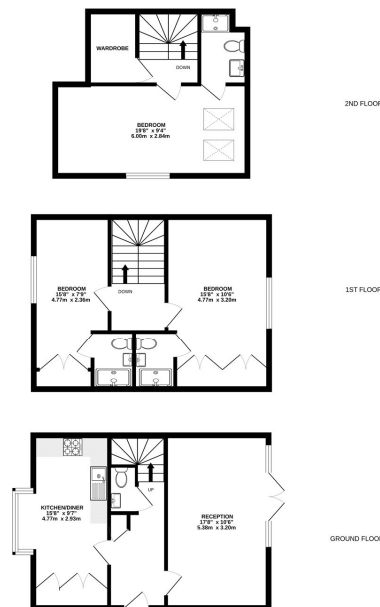
Description

A stunning three double bedroom executive home, which was newly constructed just a few years ago on a popular cul-de-sac close to Ash Train Station. Presented to the market in incredible condition throughout and with no onward chain. The ground floor comprises of underfloor heating throughout, with a fully equipped modern kitchen/diner and double aspect living room. The patio doors lead out to the lovely rear enclosed garden. The first floor consists of two double bedrooms, both with en-suites, and fitted wardrobes. The second floor has a beautiful principal bedroom, also with en-suite and more storage. Externally, there is allocated parking as well as solar panels, the rear garden also benefits from artificial grass, electricity ports and a storage shed.

Outside

Landscaped south-facing, rear garden, fully enclosed by smart wood panel fencing.

Floorplan



Whilst every attempt has been made to ensure the accuracy of the floorplan contained here, measurements of doors, windows, rooms and any other items are approximate and no responsibility is taken for any error, omission or mis-statement. This plan is for illustrative purposes only and should be used as such by any prospective purchaser. The services, systems and appliances shown have not been tested and no guarantee as to their operability or efficiency can be given.
Made with Metropix ©2024



To arrange a viewing please contact:

Tel: 01252 361550

Email: info@bridges.co.uk

Important Notice - These particulars are set out as a general outline only for the guidance of intended purchasers and do not form part of any offer or contract and must not be relied upon as statements or representations of fact. Purchasers must satisfy themselves by inspection or otherwise as to their correctness.