



## Three Bedroom Terraced House

**Ewins Close, Ash, Surrey, GU12 6RZ**

Price: £385,000

- Terraced
- Three Bedrooms
- Extended Downstairs
- Refitted Kitchen
- Driveway
- No Onward Chain
- Built In Storage
- EPC: D (57)



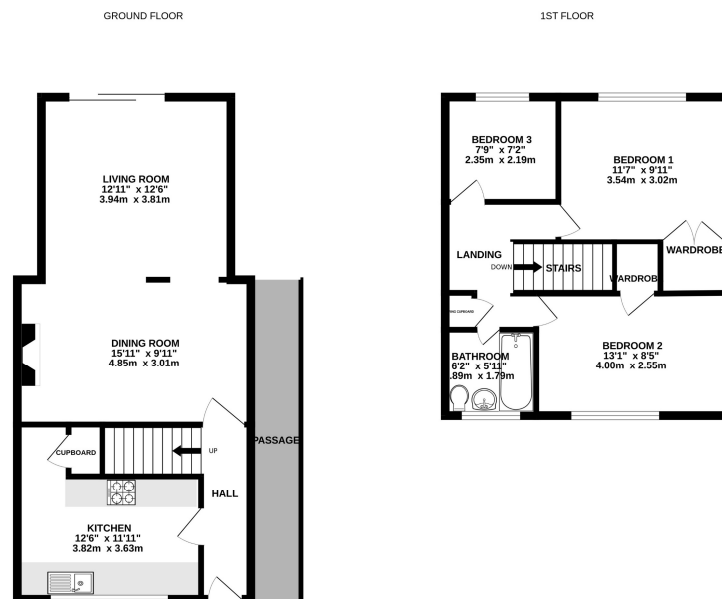
## Description

This three-bedroom family home, situated on a quiet road in Ash, is offered to the market in brilliant condition and with the benefit of having no onward chain. It has been extended to the rear to present a spacious downstairs living/dining area, which opens out to the patio area and lengthy garden. There is also a refitted kitchen to the front of the property. Upstairs are the three generous bedrooms and a family bathroom, with plenty of in-built storage. The house also has a generous driveway to the front with parking for multiple vehicles. The location of this home is sought after, as it is very close to popular local schools such as Ash Walsh and Ash Manor Secondary School. Ash train station is also just a short walk away, as are the village shops and Basingstoke Canal. We highly recommend booking a viewing to avoid disappointment.

## Outside

The rear garden has a newly built bar area, a patio and also a large storage area - as well as easy access through the side passageway.

## Floorplan



While every attempt has been made to ensure the accuracy of the floorplan contained here, measurements of doors, windows, rooms and any other items are approximate and no responsibility is taken for any error, omission or mis-statement. This plan is for illustrative purposes only and should be used as such by any prospective purchaser. The services, systems and appliances shown have not been tested and no guarantee as to their operability or efficiency can be given. Made with Metreplex 02024



To arrange a viewing please contact:

Tel: 01252 361550

Email: [info@bridges.co.uk](mailto:info@bridges.co.uk)

Important Notice - These particulars are set out as a general outline only for the guidance of intended purchasers and do not form part of any offer or contract and must not be relied upon as statements or representations of fact. Purchasers must satisfy themselves by inspection or otherwise as to their correctness.