



Four Bedroom Semi-Detached House

Hatch Lane, Old Basing, Basingstoke, Hampshire, RG24 7EE

Price: £690,000

- Four Bedrooms
- Extended Semi Detached Home
- Luxurious Five Piece Bathroom
- Expansive Front Driveway
- Spacious Rear Garden
- Detached Garage
- No Onward Chain
- EPC : D (68)



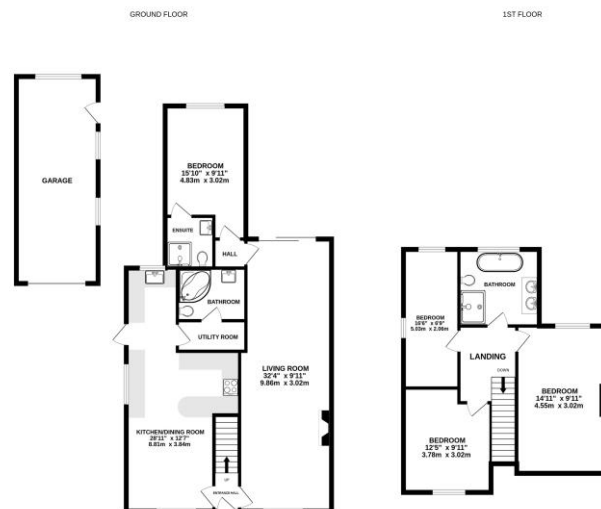
Description

Bridges are delighted to offer to the market this beautifully extended, and well presented, four bedroom, semi-detached home situated on one of the most desirable roads in Old Basing. This impressive property provides generous and flexible living space on the ground floor, with the potential for a separate annexe or home office. The accommodation includes a spacious kitchen/dining room, a utility room, a downstairs bathroom, and a living room. You will also find a principal bedroom, with two en suites, and three further bedrooms. The current owners have also created a luxurious five piece upstairs bathroom, featuring a his and hers sink.

Outside

To the front of the property is an expansive driveway with an adjoining lawn, offering ample off-road parking. Side access leads to both the garage and the rear garden. The rear garden, approximately 100ft in length, is mainly laid to lawn with mature borders, shrubs, and hedging - providing privacy and greenery. A generously sized patio area is perfect for outdoor dining, with space for a table and chairs. Towards the back of the garden, there is a shed for additional storage. The garden's flat terrain makes it ideal for children to play and enjoy outdoor activities.

Floorplan



Whilst every effort has been made to ensure the accuracy of the floorplan contained herein, measurements of rooms, windows, doors and other parts are approximate and no responsibility is taken for any discrepancy on this statement. The plan is for illustrative purposes only and should be treated as such by any prospective purchaser. The services, systems and equipment shown on the plan are based on the information as to their operability or efficiency can be given. Please refer to page 10/10.



To arrange a viewing please contact:

Tel: 01256 769999

Email: info@bridges.co.uk

Important Notice - These particulars are set out as a general outline only for the guidance of intended purchasers and do not form part of any offer or contract and must not be relied upon as statements or representations of fact. Purchasers must satisfy themselves by inspection or otherwise as to their correctness.