



## Two Bedroom End of Terrace House

**Maple Avenue, Farnborough, Hampshire, GU14 9UR**

Price: £216,000

- Two Double Bedrooms
- End Of Terrace
- Downstairs Cloakroom
- Popular Location
- Parking
- Close to Hawley Lake
- Close to Local Schools
- EPC : C (75)





## Description

The advertised price is based on a 60% share on a shared ownership basis.

Perfectly positioned in Maple Avenue, in the popular Guillemont area, is this charming two bedroom family home with a spacious layout and modern design.

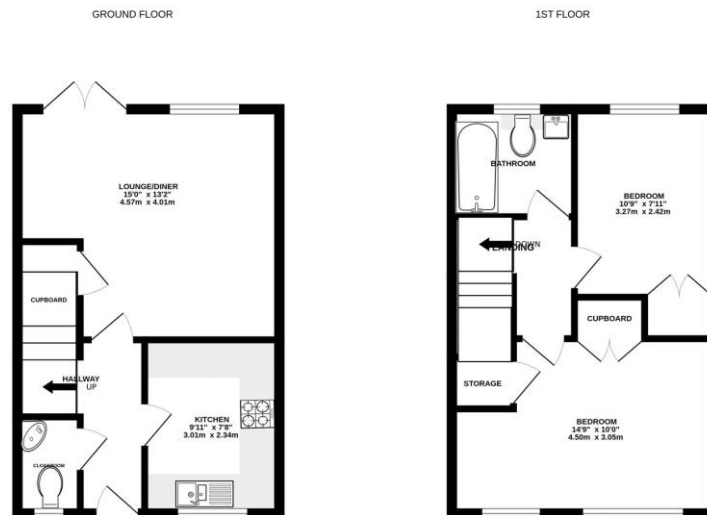
The ground floor consists of a good size kitchen with fitted appliances, a spacious lounge/diner with access out to the rear garden, and there is also a downstairs cloakroom.

The first floor offers two spacious double bedrooms both offering built in wardrobes and there is a sleek three-piece family bathroom overlooking the garden.

## Outside

A generous rear garden, offering a secure and non overlooked area backing onto the woodlands, is a perfect setting to relax and enjoy some peace and quiet but also with the ample patio space it is a great layout for entertaining.

## Floorplan



Whilst every attempt has been made to ensure the accuracy of the floorplan contained herein, measurements of doors, windows, rooms and any other items are approximate and no responsibility is taken for any errors, omissions or mis-statements. This plan is for illustrative purposes only and should be used as such by any prospective purchaser. The services, systems and appliances shown have not been tested and no guarantee as to their operability or efficiency can be given.  
Made with Metropix 02024



To arrange a viewing please contact:

Tel: 01252 361550

Email: [info@bridges.co.uk](mailto:info@bridges.co.uk)

Important Notice - These particulars are set out as a general outline only for the guidance of intended purchasers and do not form part of any offer or contract and must not be relied upon as statements or representations of fact. Purchasers must satisfy themselves by inspection or otherwise as to their correctness.