

Three Bedroom Semi-Detached House Woodland Walk, Aldershot, Hampshire, GU12 4FE

Guide Price: £350,000

- Three Bedrooms
- Garage and Parking
- No Onward Chain
- Overlooking Woodlands
- Must be Seen to be Appreciated
- Well Regarded Residential Area
- Downstairs Cloakroom
- EPC: C (77)



Description

NO ONWARD CHAIN - Situated on the fringes of the ever popular 'Woodland Walk' development, set over two floors and with internal accommodation presented in a good order throughout. The property benefits from three bedrooms, a garage as well as allocated parking, and a downstairs cloakroom.

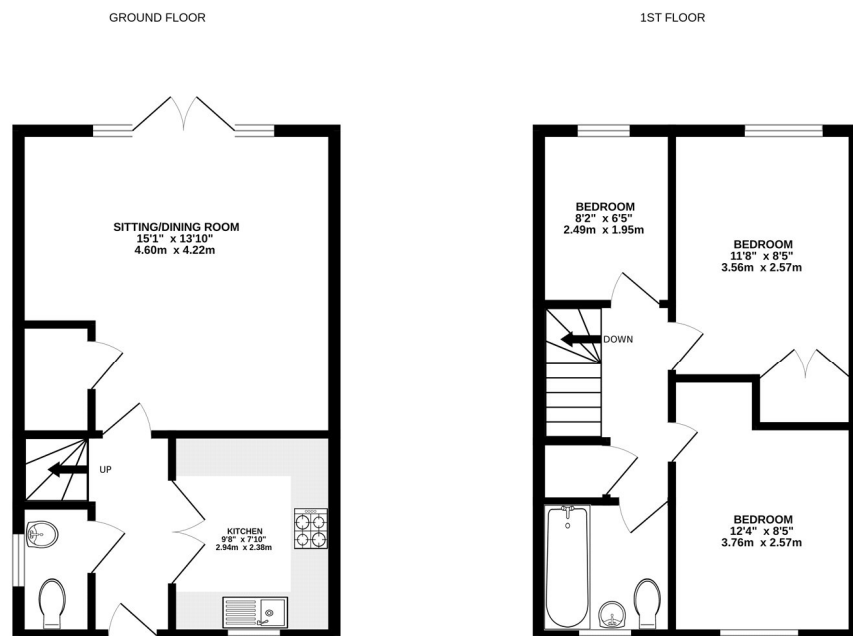
On entering the property, you are greeted with a light & airy entrance hall leading to the kitchen or the lounge, with French doors leading to the garden. The first floor offers a principal bedroom with a further two bedrooms and a family bathroom.

Bridges Estate Agents are delighted to offer this family home to the market, ideally situated for well-regarded schools for children of all ages, local amenities and good transport links, all being sold with no onward chain complications.

Outside

The property offers a garden, which is mainly laid to lawn with access to the garage and driveway.

Floorplan



Whilst every attempt has been made to ensure the accuracy of the floorplan contained here, measurements of doors, windows, rooms and any other items are approximate and no responsibility is taken for any error, omission or mis-statement. This plan is for illustrative purposes only and should be used as such by any prospective purchaser. The services, systems and appliances shown have not been tested and no guarantee as to their operability or efficiency can be given.
Made with Metropix ©2024



To arrange a viewing please contact:

Tel: 01252 361550

Email: info@bridges.co.uk

Important Notice - These particulars are set out as a general outline only for the guidance of intended purchasers and do not form part of any offer or contract and must not be relied upon as statements or representations of fact. Purchasers must satisfy themselves by inspection or otherwise as to their correctness.