



Two Bedroom First Floor Apartment

Pond Road, Farnborough, Hampshire, GU14 7GE

Price: £153,000

- Two Double Bedrooms
- First Floor Apartment
- Well Sized Living/Dining Area
- Juliet Balcony
- Allocated Parking
- No Onward Chain
- Estimated Rental Price : £1,300 pcm
- EPC : C (80)



Description

****60% SHARED OWNERSHIP****

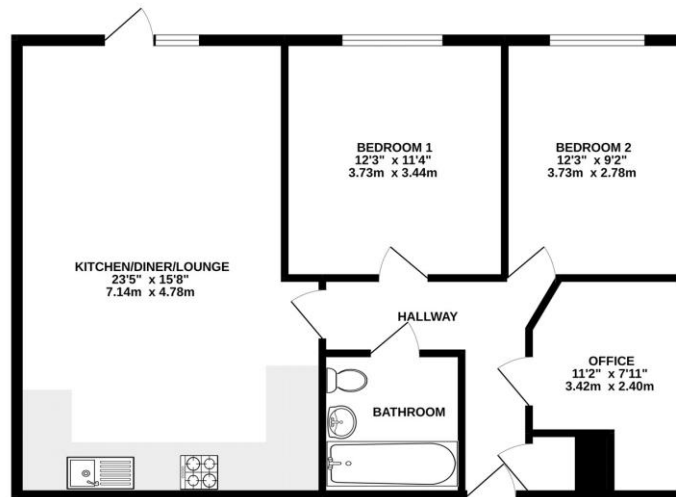
Offered to the market with no onward chain is this well presented two double bedroom first floor apartment. The property is ideally located for easy access to local amenities as well as Farnborough Main train station. The property benefits from a security entry phone system and lifts to all floors. The accommodation comprises an open plan kitchen/living room with a Juliet balcony, and a fitted kitchen with an integrated oven and hob. There are two double bedrooms and an office/storage room, and a modern bathroom.

Outside

Externally, the property benefits from an allocated parking space. and use of communal green spaces.

Floorplan

GROUND FLOOR



While every attempt has been made to ensure the accuracy of the floorplan contained here, measurements of doors, windows, rooms and any other items are approximate and no responsibility is taken for any error, omission or misstatement. This plan is for illustrative purposes only and should be used as such by any prospective purchaser. The services, systems and appliances shown have not been tested and no guarantee as to their availability or efficiency can be given.
Made with Metapic 12/2022



To arrange a viewing please contact:

Tel: 01252 361550

Email: info@bridges.co.uk

Important Notice - These particulars are set out as a general outline only for the guidance of intended purchasers and do not form part of any offer or contract and must not be relied upon as statements or representations of fact. Purchasers must satisfy themselves by inspection or otherwise as to their correctness.