

## Three Bedroom Semi-Detached House

**Middlemoor Road, Frimley, Camberley, Surrey, GU16 8BT**

Guide Price: £400,000

- Three Bedrooms
- End of Terrace House
- Conservatory
- Private Rear Garden
- uPVC Double Glazing
- Ancells Development in Frimley
- No Onward Chain
- EPC : D (62)



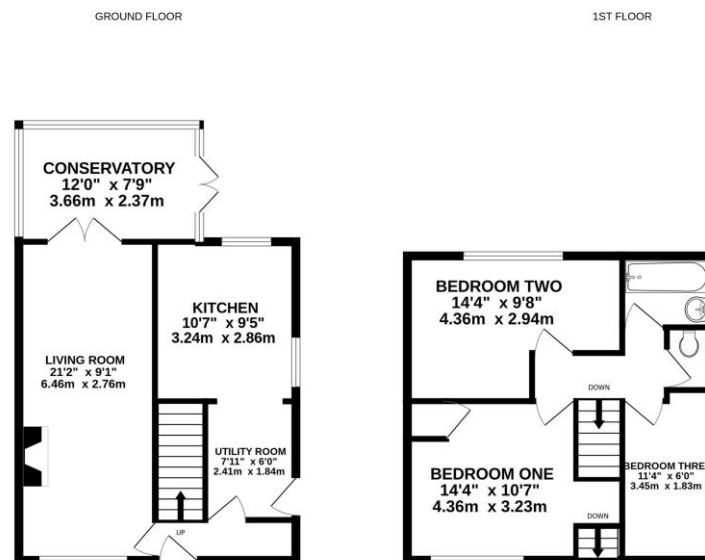
## Description

A spacious three bedroom end of terrace home located in a popular location in Frimley within easy access to local amenities, great commuter links, and schools. The property is offered to the market with no onward chain. The accommodation comprises a dual aspect living/dining room, kitchen and breakfast room, and a lean to conservatory to the rear of the property all on the ground floor. To the first floor you have two double bedrooms, a further single bedroom, a family bathroom and separate cloakroom.

## Outside

Externally the property benefits from an enclosed and low maintenance rear garden mainly laid over two terraces with artificial turf and a patio area as well as gated side access. To the front there is an enclosed front garden space offering great potential for off street parking (STPP).

## Floorplan



Whilst every attempt has been made to ensure the accuracy of the floorplan contained here, measurements of doors, windows, rooms and any other items are approximate and no responsibility is taken for any error, omission or mis-statement. This plan is for illustrative purposes only and should be used as such by any prospective purchaser. The services, systems and appliances shown have not been tested and no guarantee as to their operability or efficiency can be given.  
Made with Metropix 02/24



To arrange a viewing please contact:

Tel: 01252 361550

Email: [info@bridges.co.uk](mailto:info@bridges.co.uk)

Important Notice - These particulars are set out as a general outline only for the guidance of intended purchasers and do not form part of any offer or contract and must not be relied upon as statements or representations of fact. Purchasers must satisfy themselves by inspection or otherwise as to their correctness.