

Important Notice - These particulars are set out as a general outline only for the guidance of intended purchasers and do not form part of any offer or contract and must not be relied upon as statements or representations or fact. Purchasers must satisfy themselves by inspection or otherwise as to their correctness.

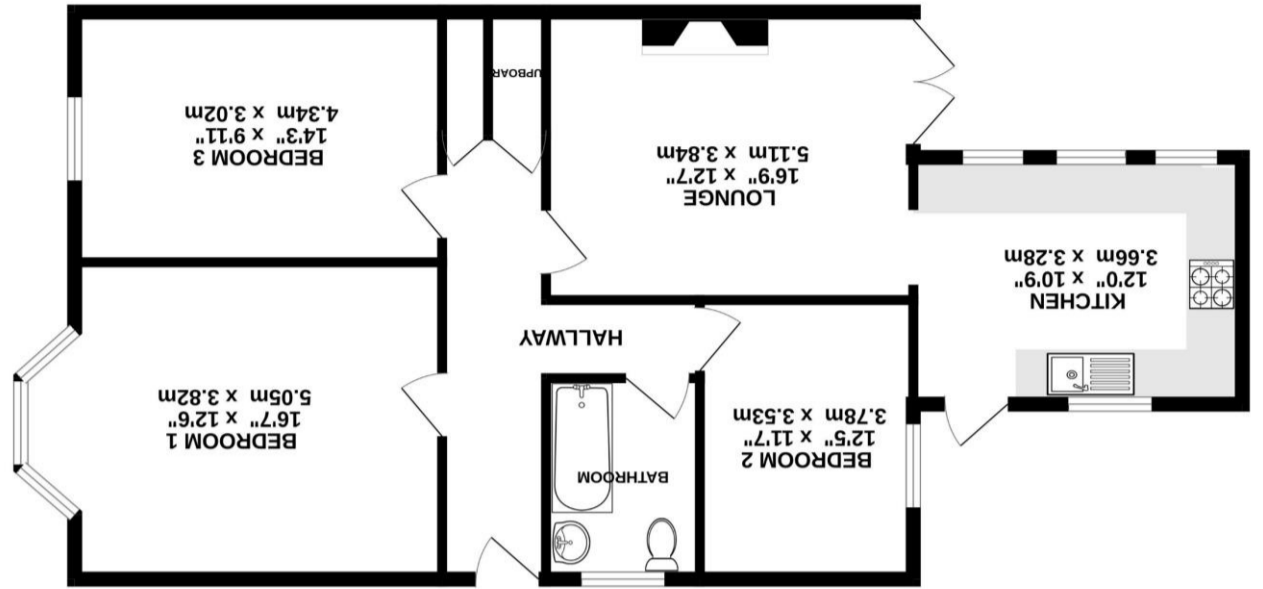
Email: info@orchardbybridges.co.uk

Tel: 01276 685544

To arrange a viewing
please contact:



While every attempt has been made to ensure the accuracy of the floorplan contained here, measurements of doors, windows, rooms and other items are approximate and no responsibility is taken for any error, omission or mis-statement. This plan is for illustrative purposes only and should be used as such by any prospective purchaser. The services, systems and appliances shown have not been tested and no guarantee as to their operability or efficiency can be given.
Made with Mokepa ©2024



GROUND FLOOR



Middle Gordon Road, Camberley, Surrey, GU15 2JA



The Property...

NO ONWARD CHAIN! IN NEED OF MODERNISATION!

Nestled in a sought-after residential area, this ground floor maisonette presents a rare opportunity to own a spacious and conveniently positioned home.

Boasting three well-proportioned bedrooms, the inviting living space is complemented by a separate kitchen.

Step outside to a garden, perfect for enjoying outdoor gatherings or simply relaxing in the fresh air.

With the added convenience of off-street parking facilities to the front of the maisonette.

Outside

To the front offers off street parking.

To the rear there is a garden featuring a big outbuilding, perfect for storage or a home office.

Property Features

- Three Bedroom Maisonette
- Ground Floor
- Central Location
- Ideal Investment Opportunity
- Allocated Parking
- Gas Central Heating
- Est. Rent: £1,600. pcm
- EPC : D (67)
- Council Tax Band : C