



Five Bedroom End of Terrace House

Hillside, Camberley, GU15 3DA

Price: £675,000

- Four/Five Bedrooms
- End of Terrace House
- Spacious Open Plan Kitchen/Dining Room
- Three Bathrooms
- Driveway and a Garage
- Town Centre Location
- Built in 2017 by CALA Homes
- EPC : B (85)



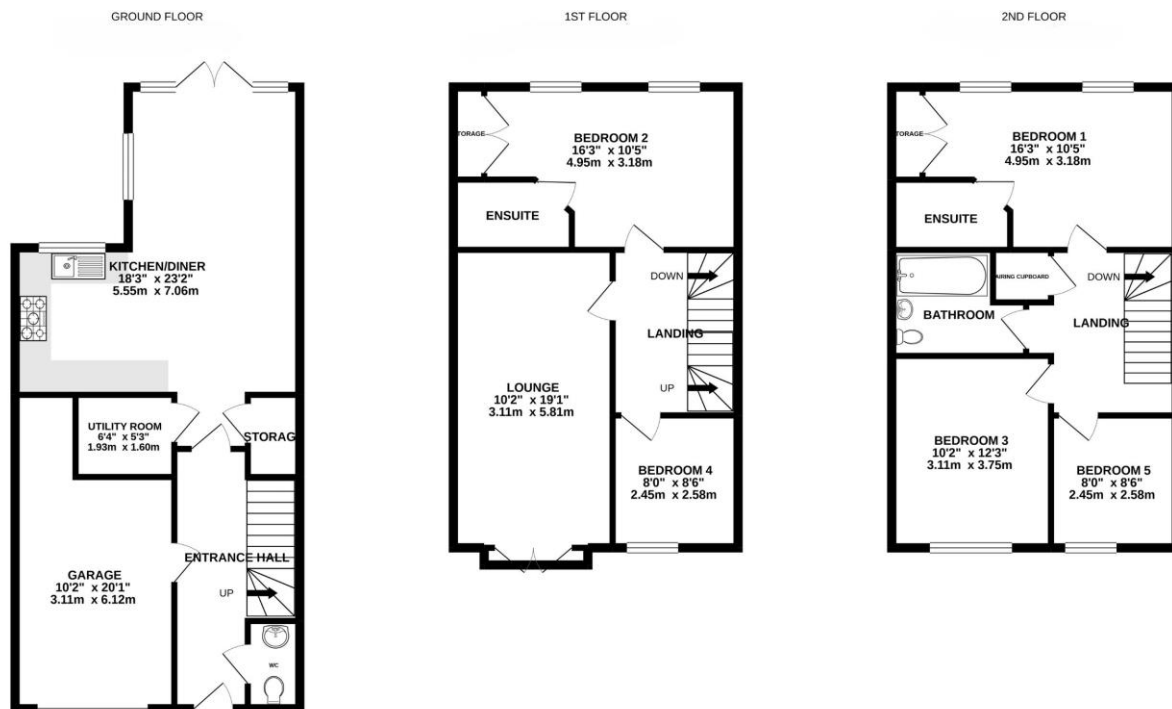
Description

A superbly presented four/five bedroom end of terrace town house constructed to a high specification by CALA Homes in 2017, positioned within walking distance of Camberley town centre and railway station. The property is situated in a cul-de-sac and benefits from driveway parking and an integral garage with a door directly accessing into the hallway. The main feature of the ground floor is the spacious open plan kitchen/dining room which opens onto the westerly aspect landscaped rear garden. There is also a well appointed utility room and a cloakroom. On the first floor there is a lounge with double doors opening to a Juliette balcony, principal bedroom with an en suite shower room, bedroom five/home office, and a bathroom. On the second floor there are two double bedrooms, one with en suite and a further family bathroom, plus a further bedroom.

Outside

To the front there is a driveway and an integral garage. The remainder of the front garden is laid to lawn. There is access via the side gate into the rear garden. The garden has a patio immediately to the rear of the property leading onto an area of artificial grass, all enclosed by mature flower and shrub borders.

Floorplan



TO ARRANGE A VIEWING PLEASE CONTACT:

Tel: 01276 685544 or Email:
camberley@bridges.co.uk



Important Notice - These particulars are set out as a general outline only for the guidance of intended purchasers/tenants and do not form part of any offer or contract and must not be relied upon as statements or representations of fact. Purchasers/Tenants must satisfy themselves by inspection or otherwise as to their correctness.