

Three Bedroom Semi-Detached House

The Almond, Plot 27, Ively Road, Fleet, GU51 3GL

Asking Price: £605,000

- THE ALMOND | Plot 27
- INCENTIVES AVAILABLE**
- Three Bedroom, Two Bathroom
- Contemporary Style Kitchen
- Nestled in a beautiful countryside setting surrounded by acres of parkland
- Read to Move in Now



Description

The Almond boasts 1,393 sq. ft. in total. Plot 27 is an semi detached home set over three floors providing valuable living space.

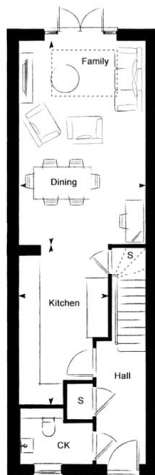
A beautiful collection of traditionally crafted houses, all built to St Edward's exceptional standards. With private gardens, leafy streets and a position close to the Village Green and Linear Park, these homes enjoy a particularly verdant setting.

Hartland Mews is also conveniently located for the new primary school and Village Centre, so you can enjoy a wide array of amenities and community facilities just a few moments from your front door.

*Please note photos are of the development and may not be the exact property

Outside

Floorplan



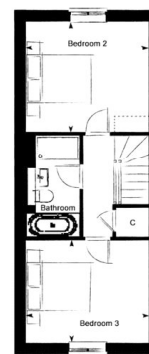
Hartland Village, Hartland Mews - The Almond, Property 3, Ground Floor

Dimensions	6.20m x 3.86m	20' 4" x 12' 8"
Family/Dining		
Kitchen	4.90m x 2.75m	16' 1" x 9' 0"



Hartland Village, Hartland Mews - The Almond, Property 3, First Floor

Key	Dimensions	3.86m x 3.49m	12' 8" x 11' 5"
CK	Cloakroom		
S	Store		
	Living Room	4.18m x 3.85m	13' 8" x 12' 6"



Hartland Village, Hartland Mews - The Almond, Property 3, Second Floor

Key	Dimensions	3.86m x 3.49m	12' 8" x 11' 5"
	Bedroom 2		
	Bedroom 3	3.86m x 3.24m	12' 8" x 10' 6"

St Edward



To arrange a viewing please contact:
Tel: 01252 361550
Email: info@bridges.co.uk

Important Notice - These particulars are set out as a general outline only for the guidance of intended purchasers and do not form part of any offer or contract and must not be relied upon as statements or representations of fact. Purchasers must satisfy themselves by inspection or otherwise as to their correctness.