



Three Bedroom Semi-Detached House

The Rowan Plot 25 Hartland Village, Ively Road, Fleet, GU51 3GL

Asking Price: £550,000

- THE ROWAN | Plot 25
- INCENTIVES AVAILABLE**
- Principal bedroom with ensuite and fitted wardrobes
- Nestled in a beautiful countryside setting surrounded by acres of parkland
- Ready to move into now



Description

The Rowan is a beautiful 3-bedroom, semi-detached house type totalling 1,038 sq. ft. and set over two storeys.

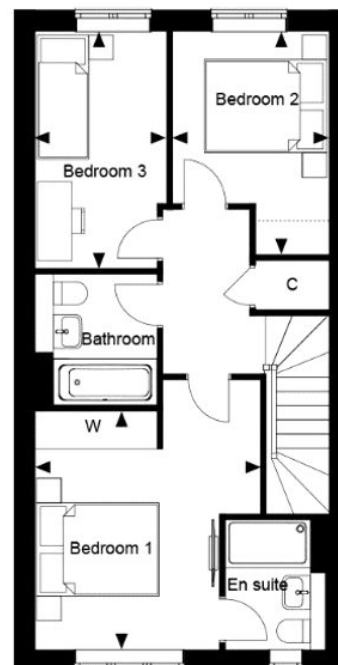
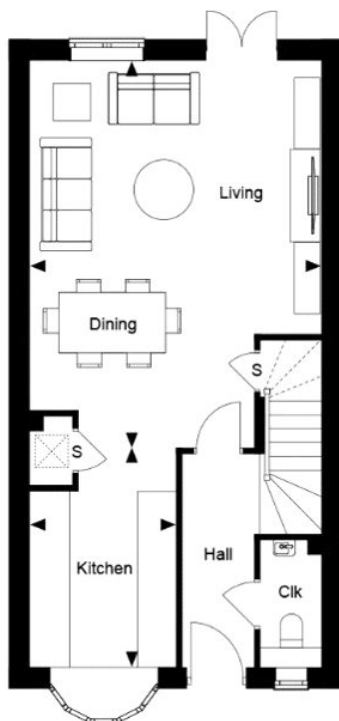
As well as an open-plan kitchen and dining/living area that opens into a private garden, the ground floor of House 5 also includes a separate cloakroom and store cupboard.

All three bedrooms are located on the first floor. Bedroom one features a built-in wardrobe and en suite shower room and there is also a further family bathroom available to the second and third bedrooms.

Discover a village for life in the idyllic Hampshire countryside. Hartland Village brings St Edward's undisputed quality to a choice location, creating a new village of thoughtfully designed houses and contemporary apartments surrounded by rich natural woodland.

A beautiful collection of traditionally crafted houses, all built to St Edward's exceptional standards. With private gardens, leafy streets and a position close to the Village Green and Linear Park, these homes enjoy a particularly verdant setting.

Floorplan



To arrange a viewing please contact:
Tel: 01252 361550
Email: info@bridges.co.uk