

Two Bedroom Terraced House

Townsend Close, Bracknell, Berkshire, RG12 0XE

Offers in excess of: £325,000

- Two Bedroom Terraced Home
- Refitted Bathroom
- Driveway and Hardstand
- Gas Radiator Heating and Double Glazing
- Enclosed Garden
- Desirable Forest Park
- No Onward Chain
- EPC: C (73)



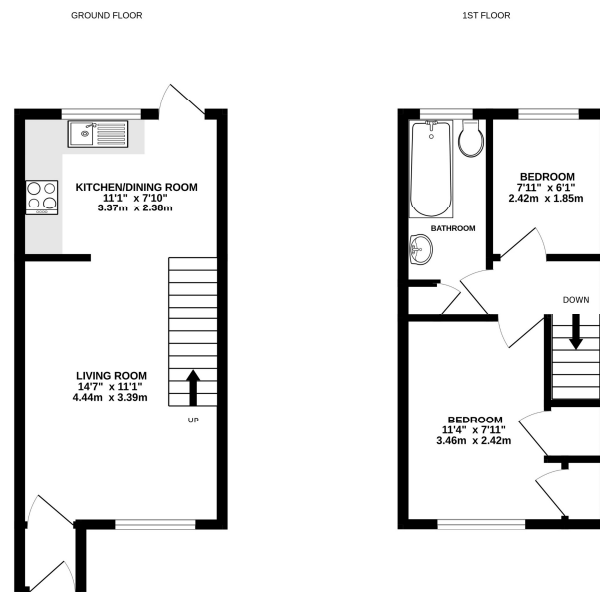
Description

Located in the ever-popular Forest Park is this recently updated, well presented two bedroom terrace home. The property has had the same owner since circa 1996 and is perfectly positioned for easy access to local schools, amenities, Swinley Forest, commuter links, as well as a local supermarket. Benefits include a refitted bathroom, a kitchen/dining area, recently refitted flooring, redecorated throughout, gas radiator heating, double glazing, ample off-road parking to front, and a secluded, enclosed rear garden, ideal first buy/investment with no onward chain.

Outside

The garden is of good size and offers seclusion and consists of a slab patio, an area of lawn, space for a summer house/shed, rear gated access, all enclosed by wood panel fencing. Driveway parking for multiple vehicles.

Floorplan



While every attempt has been made to ensure the accuracy of the floorplan contained here, measurements of doors, windows, stairs and any other items are approximate and not necessarily accurate for any one condition or use. The plan is a guide only and should not be relied on for any purpose. The services, system and appliances shown have not been tested and no guarantee is made as to their operability or efficiency on the ground.
Made with LetraMap C2124



To arrange a viewing please contact:

Tel: 01256 880001

Email: info@bridges.co.uk

Important Notice - These particulars are set out as a general outline only for the guidance of intended purchasers and do not form part of any offer or contract and must not be relied upon as statements or representations of fact. Purchasers must satisfy themselves by inspection or otherwise as to their correctness.