

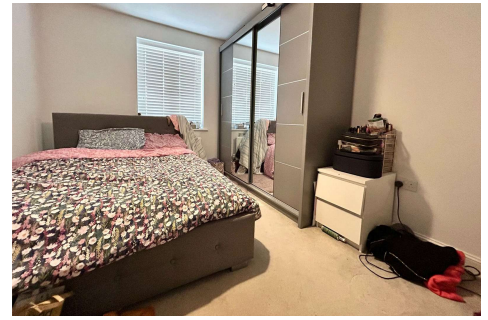
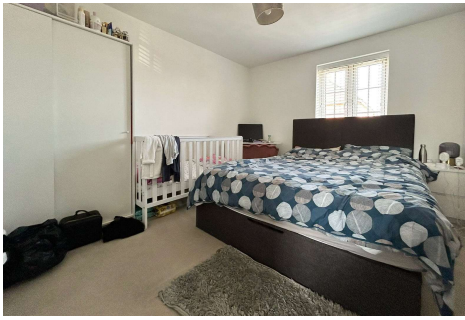


Two Bedroom Apartment

Masterson Close, Wellesley, Aldershot, Hampshire, GU11 4EF

Price: £280,000

- Apartment
- Two Double Bedrooms
- Two Bathrooms
- Two Allocated Parking Spaces
- Outstanding Condition
- Positioned in Wellesley
- Integrated Appliances
- EPC: B (85)



Description

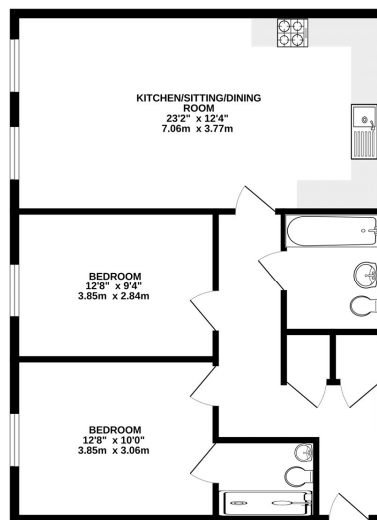
Situated in the vibrant 'Wellesley' development is this second floor apartment, offered to the market in immaculate condition - with the added benefit of two allocated parking spaces. This is an apartment that hasn't been offered for sale since the building was constructed and due to its position, could be easily seen as one of the most desirable locations on the whole of the Wellesley Development. Accommodation comprises a good-sized living room/kitchen with integrated appliances, two double bedrooms, along with numerous storage/utility cupboards. There are nearby woodland walks and a viewing area with far reaching views over Aldershot and beyond. Bridges Estate Agents are delighted to offer this fabulous apartment to the market and highly recommend viewings.

Outside

Two allocated parking spots and positioned close to local woodlands and walking routes.

Floorplan

SECOND FLOOR



While every attempt has been made to ensure the accuracy of the floorplan contained here, measurements of floors, elevations, areas and any other facts are approximate and no responsibility is taken for any error or omission in the information. The plan is the absolute property of the seller and shall be used only for the purpose of purchase. The plan, systems and appliances shown have not been tested and no guarantee is given as to their operability or efficiency. Made with Microvell CO204



To arrange a viewing please contact:

Tel: 01252 361550

Email: info@bridges.co.uk

Important Notice - These particulars are set out as a general outline only for the guidance of intended purchasers and do not form part of any offer or contract and must not be relied upon as statements or representations of fact. Purchasers must satisfy themselves by inspection or otherwise as to their correctness.