



## One Bedroom Terraced House

**Park Row, Farnham, Surrey, GU9 7JH**

Price: £325,000

- One Double Bedroom
- Grade II Listed Cottage
- Open Planned
- Courtyard Garden
- No Onward Chain
- Farnham Town Centre
- Stone's Throw from Farnham Park
- EPC : TBC



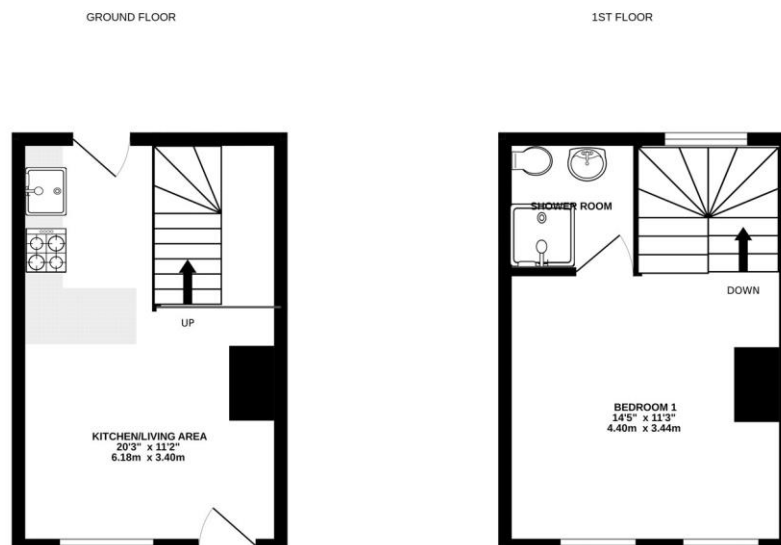
## Description

A charming one double bedroom grade II listed building situated in the heart of Farnham's town centre, available to the market with no onward chain complications. This well presented home offers a contemporary open planned lounge/kitchen area, with both a freestanding/integrated appliances. The first floor comprises an impressive principal bedroom offering fantastic space, sash windows, and an en suite shower room.

## Outside

Externally, you benefit from a private courtyard garden and being a stone's throw from both Farnham Park and Farnham town centre that offers an abundance of amenities.

## Floorplan



Whilst every attempt has been made to ensure the accuracy of the floorplan contained here, measurements of doors, windows, rooms and any other areas are approximate and no responsibility is taken for any error, omission or mis-statement. This plan is for illustrative purposes only and should be used as such by any prospective purchaser. The services, systems and appliances shown have not been tested and no guarantee as to their operability or efficiency can be given.  
Made with Metropix 12/2014



To arrange a viewing please contact:

Tel: 01252 361550

Email: [info@bridges.co.uk](mailto:info@bridges.co.uk)

Important Notice - These particulars are set out as a general outline only for the guidance of intended purchasers and do not form part of any offer or contract and must not be relied upon as statements or representations of fact. Purchasers must satisfy themselves by inspection or otherwise as to their correctness.