



## Two Bedroom Semi-Detached House

Wyvern Close, Ash Vale, Surrey, GU12 5SH

Price: £350,000

- Two Double Bedrooms
- Semi Detached
- Two En Suites
- No Chain
- Downstairs Cloakroom
- Cul-de-Sac Location
- Driveway Parking
- EPC: C (69)



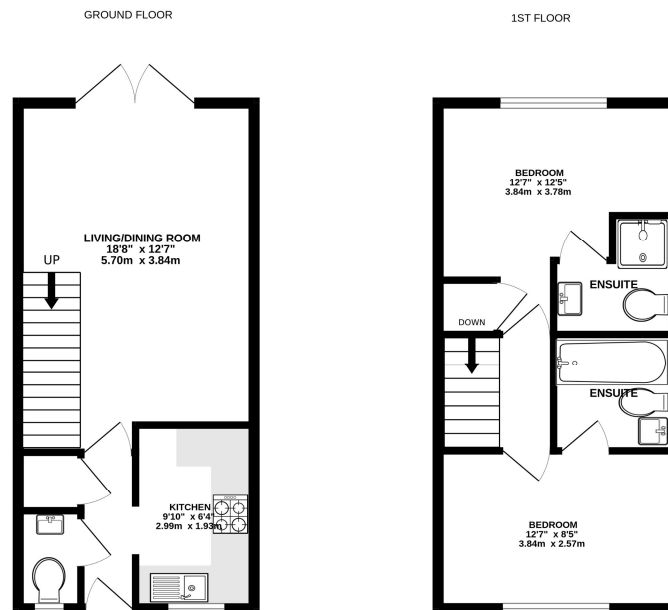
## Description

This lovely, two double bedroom, semi-detached home, located on the ever-popular Old Farm development in Ash Vale, is offered to the market with no onward chain. This great house is found in a tucked away cul-de-sac and has driveway parking to the front. Inside, there is a kitchen to the front, a downstairs cloakroom and a generous living/dining room - which overlooks the garden. Upstairs, there are two double bedrooms with en-suites - both fitted with wardrobes. Outside, there is a generously sized rear garden. This great spot in Ash Vale is close to the beautiful nature reserve, and also to Ash Vale mainline train station. With the shops and amenities also close by, these great houses make brilliant first time buys or investment purchases.

## Outside

Externally there is parking for two vehicles on the driveway, rear access to the enclosed rear garden and is located on a quiet cul-de-sac.

## Floorplan



While every attempt has been made to ensure the accuracy of the floorplan contained here, measurements of doors, windows, rooms and any other items are approximate and no responsibility is taken for any error, omission or misstatement. This plan is for illustrative purposes only and should be used as a guide only by any prospective purchaser. The services, systems and appliances shown have not been tested and no guarantee as to their operability or efficiency can be given.  
Made with iMetreX 12/2024



To arrange a viewing please contact:

Tel: 01252 361550

Email: [info@bridges.co.uk](mailto:info@bridges.co.uk)

Important Notice - These particulars are set out as a general outline only for the guidance of intended purchasers and do not form part of any offer or contract and must not be relied upon as statements or representations of fact. Purchasers must satisfy themselves by inspection or otherwise as to their correctness.