

Two Bedroom Apartment

Charteris Close, Wellesley, Aldershot, Hampshire, GU11 4DZ

Price: £138,500

- Two Double Bedrooms
- 50% Shared Ownership
- Two Allocated Parking Spaces
- Close to Town Centre
- Lease: Approx. 120 Years
- Scenic Views
- Close to Train Station
- EPC: B (84)



Description

****50% SHARED OWNERSHIP WITH NO ONWARD CHAIN****

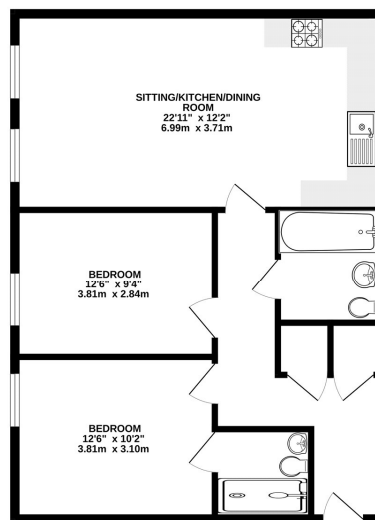
A fantastic opportunity to purchase the 50% share of this two bedroom apartment, situated at the heart of the Wellesley development in Aldershot. This well presented apartment comes with the unusual bonus feature of two allocated parking spaces. Accommodation comprises of an open plan living room, kitchen with integrated appliances and two spacious double bedrooms with fitted wardrobes - as well as an en-suite in the principal. There are also storage cupboards and family bathroom. Additionally, there is visitor parking and lockable outside storage for bicycles. Aldershot town centre and mainline railway station are both less than one mile away, as are local shops and woodland walks.

Outside

Two parking spaces and positioned close to local woodland and walking routes.

Floorplan

SECOND FLOOR



While every attempt has been made to ensure the accuracy of the floorplan contained here, measurements of floors, walls, stairs and any other parts are approximate and no responsibility is taken for any error or omission in the information. The plan is for illustrative purposes only and should be used as a guide only for prospective purchasers. The fixtures, fittings and appliances shown have not been tested and no guarantee is given as to their operability or efficiency prior to sale.
Made with Microvell CO204



To arrange a viewing please contact:

Tel: 01252 361550

Email: info@bridges.co.uk

Important Notice - These particulars are set out as a general outline only for the guidance of intended purchasers and do not form part of any offer or contract and must not be relied upon as statements or representations of fact. Purchasers must satisfy themselves by inspection or otherwise as to their correctness.