



Three Bedroom Detached Bungalow Wellington Lane, Farnham, Surrey, GU9 9BA

Offers in Excess of: £400,000

- Three Bedrooms
- Detached Bungalow
- Separate Utility Room
- Boarded Loft Space
- South Facing Patio Garden
- Driveway Parking
- Stunning Kitchen
- EPC : D (62)



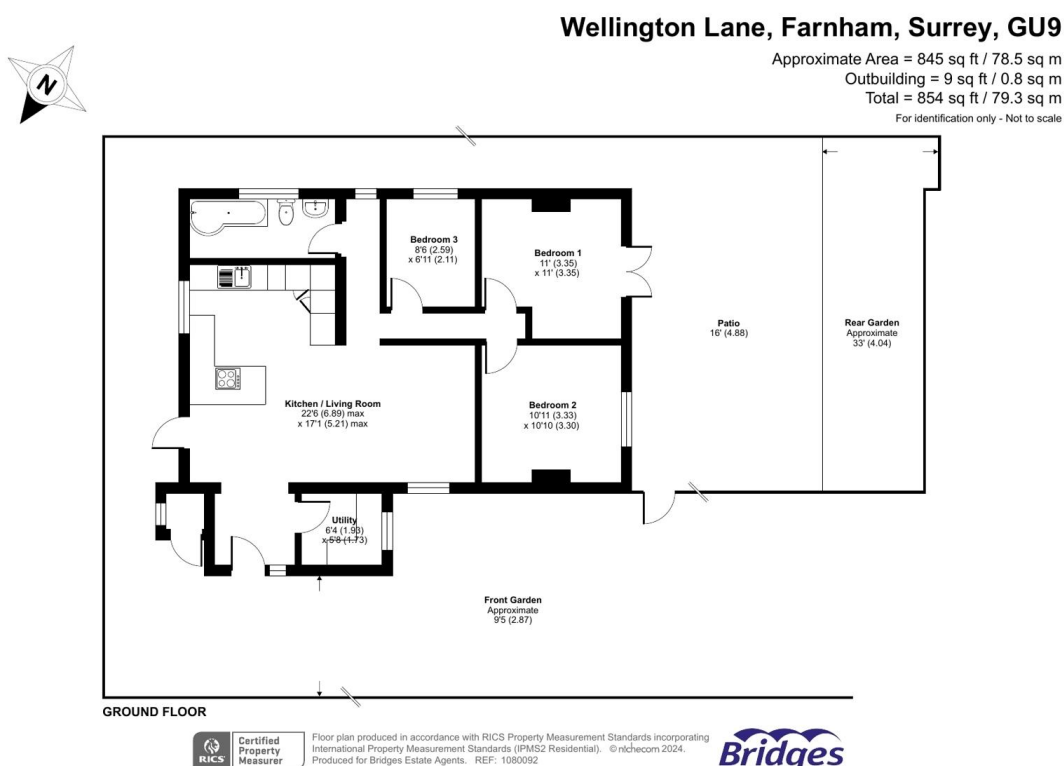
Description

A beautifully presented three bedroom detached bungalow, refurbished throughout, and located on a peaceful lane within walking distance to sought after schools. The property comprises an outstanding open plan kitchen/living/dining room with a double aspect allowing for plenty of light. The kitchen has a wide range of contemporary cupboard and draws units, with an integrated double oven, an induction hob, and space for further appliances. The property benefits from three well proportioned bedrooms, a modern three piece bathroom suite, a separate utility room, a porch which offers access into a spacious loft area that has been boarded. Additionally, the property offers fantastic scope, with planning in place for a side extension, which can be viewed with the following planning application number WA/2022/01427.

Outside

Externally is just as impressive with parking available for multiple vehicles to the front. There is a south facing terrace which is enclosed by picket fencing, ideal for entertaining guests. There is side access leading to the rear of the property where there is a courtyard area enclosed by a feature brick wall, which could make for a Mediterranean style snug/area, and there is a storage shed.

Floorplan



TO ARRANGE A VIEWING PLEASE CONTACT:
Tel: **01252 361550** or Email: **info@bridges.co.uk**



Important Notice - These particulars are set out as a general outline only for the guidance of intended purchasers/tenants and do not form part of any offer or contract and must not be relied upon as statements or representations of fact. Purchasers/Tenants must satisfy themselves by inspection or otherwise as to their correctness.