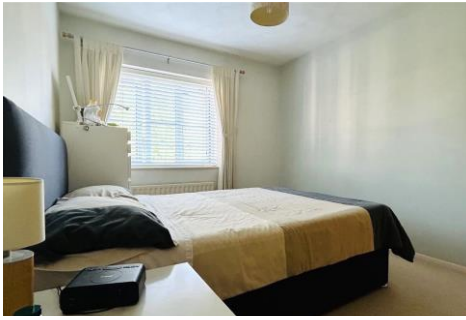




One Double Bedroom Top Floor Apartment Osborne Road, Farnborough, Hampshire, GU14 6UZ

Price: £177,500

- One Double Bedroom
- Top Floor Apartment
- Gas Central Heating
- Parking
- Communal Gardens
- Security Entry Phone System
- Popular Location
- EPC: C (74)



Description

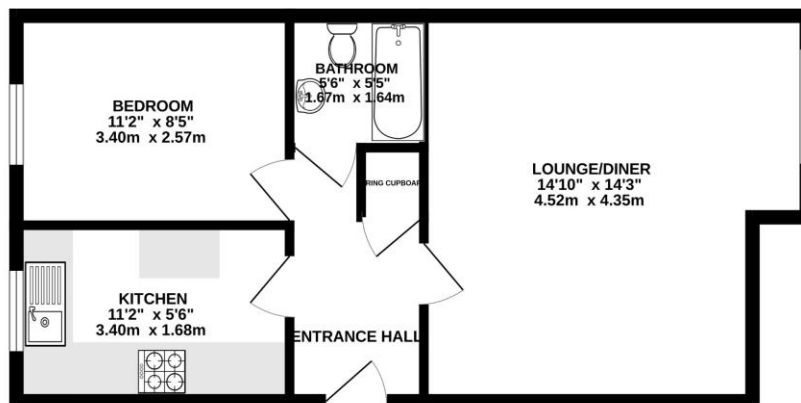
This one bedroom second floor apartment is located in the popular village of North Camp and well located for easy access to local amenities and local transport links. The property benefits from a security entry phone system, parking and use of communal gardens. The accommodation comprises an entrance hall with access to the loft storage space, front aspect living/dining room, fitted kitchen with integrated electric oven and gas hob and a breakfast bar, rear aspect double bedroom and a modern fitted bathroom.

Outside

To the front of the property there is a residents car park providing ample parking for visitors as well. The communal gardens are located to the rear of the development and can be access via a side access gate, they are mainly lawned with some trees and shrubbery.

Floorplan

SECONDFLOOR



Whilst every attempt has been made to ensure the accuracy of the floorplan contained here, measurements of doors, windows, rooms and any other items are approximate and no responsibility is taken for any error, omission or mis-statement. This plan is for illustrative purposes only and should be used as such by any prospective purchaser. The services, systems and appliances shown have not been tested and no guarantee as to their operability or efficiency can be given.
Made with Metropix ©2024



To arrange a viewing please contact:

Tel: 01252 361550

Email: info@bridges.co.uk

Important Notice - These particulars are set out as a general outline only for the guidance of intended purchasers and do not form part of any offer or contract and must not be relied upon as statements or representations of fact. Purchasers must satisfy themselves by inspection or otherwise as to their correctness.