



Four/Five Bedroom Detached House

Lapin Lane, Basingstoke, Hampshire, RG22 4XH

Price: £575,000

- Four/Five Bedrooms
- En Suite to Bedroom One
- Bedroom Five/Study or Nursery
- Refitted Kitchen/Diner
- Family Room and Lounge
- Garage
- Off Street Parking for Multiple Vehicles
- EPC : C (71)



Description

Offered to the market is this extended four/five bedroom detached house located on the ever popular Hatch Warren. On the ground floor there is a lounge with a box bay window, a refitted kitchen diner with granite worktops, an office/family room, and a downstairs cloakroom. Upstairs, you have bedroom one with an en suite, three further bedrooms, bedroom five/study, and a family bathroom.

Outside

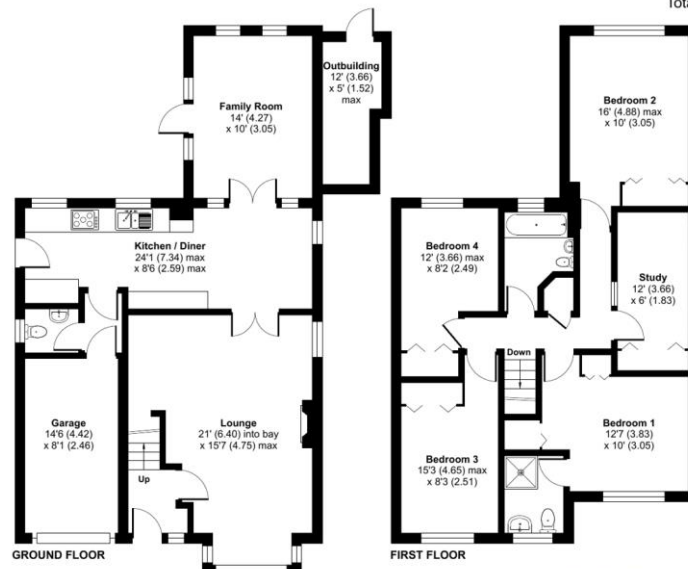
To the front of the property there is off street parking for multiple vehicles and access to the garage via an up and over door. The rear garden has a brick shed and is fully enclosed with a lawn area and mature flower beds.

Floorplan

Lapin Lane, Basingstoke, Hampshire, RG22

Approximate Area = 1461 sq ft / 135.7 sq m
 Garage = 115 sq ft / 10.6 sq m
 Outbuilding = 54 sq ft / 5 sq m
 Total = 1630 sq ft / 151.3 sq m

For identification only - Not to scale



Floor plan produced in accordance with RICS Property Measurement Standards incorporating International Property Measurement Standards (IPMS2 Residential). ©ivkhecom 2024. Produced for Bridges Estate Agents. REF: 1195645



To arrange a viewing please contact:

Tel: 01256 880001

Email: info@bridges.co.uk

Important Notice - These particulars are set out as a general outline only for the guidance of intended purchasers and do not form part of any offer or contract and must not be relied upon as statements or representations of fact. Purchasers must satisfy themselves by inspection or otherwise as to their correctness.