

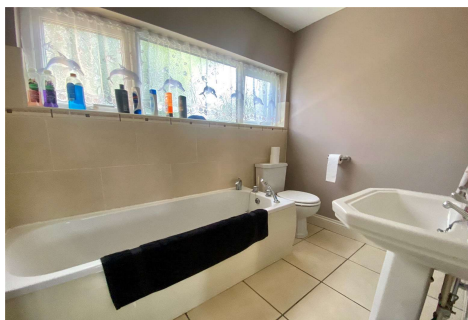


Three Bedroom House

Robin Hood Close, Farnborough, Hampshire, GU14 8TW

Guide Price: £350,000

- Three Bedrooms
- End of Terrace Home
- Living/Dining Room
- Downstairs Cloakroom
- En Suite to Main Bedroom
- Garage in Block
- Enclosed Rear Garden
- EPC : D (58)



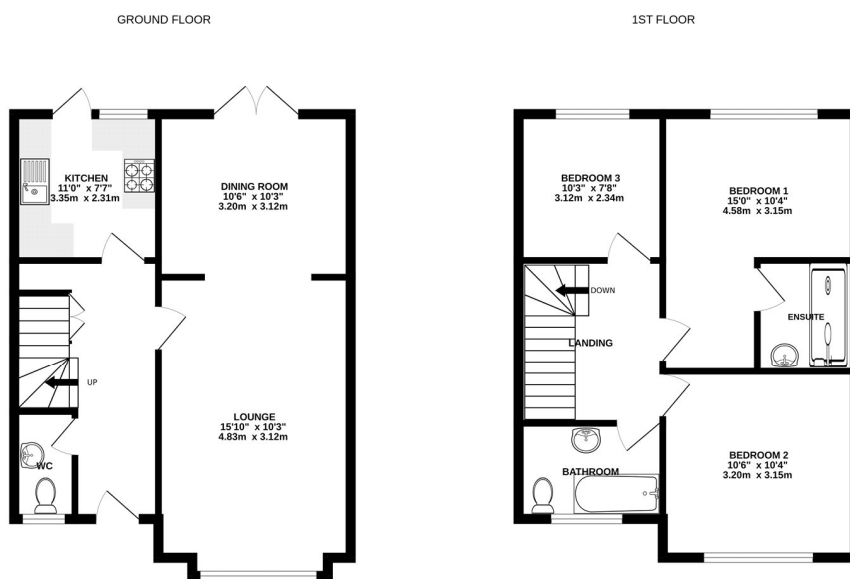
Description

Tucked away within a small courtyard on an established development is this three bedroom staggered end of terrace home, within easy access to Farnborough Sixth Form College, the M3 and A331. The property benefits from a downstairs cloakroom, living/dining room with double doors leading to the rear garden and a separate kitchen. To the first floor there is three bedrooms with the main bedroom benefiting from an en suite and a family bathroom.

Outside

The rear garden is comprised of an area of lawn and a brick shed enclosed by a boundary wall. There are residential parking areas with a garage in block.

Floorplan



Whilst every attempt has been made to ensure the accuracy of the floorplan contained here, measurements of doors, windows, rooms and any other items are approximate and no responsibility is taken for any error, omission or mis-statement. This plan is for illustrative purposes only and should be used as such by any prospective purchaser. The services, systems and appliances shown have not been tested and no guarantee as to their operability or efficiency can be given.
Made with Metropix 12/2023

Bridges
co.uk

the hub

To arrange a viewing please contact:

Tel: 01252 361550

Email: info@bridges.co.uk

Important Notice - These particulars are set out as a general outline only for the guidance of intended purchasers and do not form part of any offer or contract and must not be relied upon as statements or representations of fact. Purchasers must satisfy themselves by inspection or otherwise as to their correctness.