

## Two Bedroom Apartment

**Bartrams Close, Ash, Surrey, GU12 6FX**

Price: £400,000

- Two Double Bedrooms
- Executive Penthouse Apartment
- Luxury Kitchen
- Open Plan Living Space
- Two Luxury Bathrooms
- Secure Entry System
- Allocated Parking
- EPC: C (69)



## Description

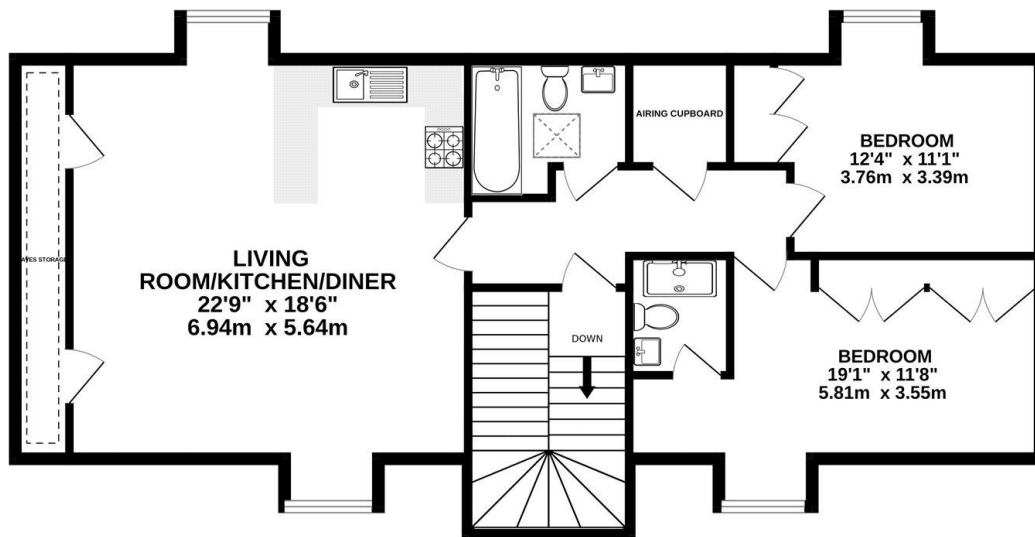
A simply stunning, two double bedroom, executive penthouse apartment - which is located in this bespoke development and was constructed less than five years ago, by a renowned local builder, to an extremely high finish. With a secure entry system, you are led up to the top floor where the stunning apartment awaits you. With generous open plan living space flowing superbly into a high specification kitchen. This living area is perfect for people who love to entertain and is further complimented by vaulted ceilings - adding to the feeling of light and space. There is also high quality laminate flooring throughout the living areas. This then leads onto a luxury family bathroom in the centre of the apartment. The principal bedroom boasts high quality fitted wardrobes, an area for dressing and a luxury en suite shower room. The second bedroom is equally well proportioned, boasting fitted wardrobes and high ceilings. The development is located within walking distance to local parks and shops - as well as the fabulous Hogs Back Brewery and The Greyhound pub! It is only a short drive to Ash Wharf shops and Ash train station, and commuting is made even easier with the A331 and A3 close by - with Farnham also just down the road! Call us today to come and take a look!

## Outside

There is a smart, tarmacked car park area and well presented communal grounds.

## Floorplan

### PENTHOUSE



Whilst every attempt has been made to ensure the accuracy of the floorplan contained here, measurements of doors, windows, rooms and any other items are approximate and no responsibility is taken for any error, omission or mis-statement. This plan is for illustrative purposes only and should be used as such by any prospective purchaser. The services, systems and appliances shown have not been tested and no guarantee as to their operability or efficiency can be given.  
Made with Metropix ©2024



**TO ARRANGE A VIEWING PLEASE CONTACT:**  
Tel: **01252 361550** or Email: **info@bridges.co.uk**



**Important Notice** - These particulars are set out as a general outline only for the guidance of intended purchasers/tenants and do not form part of any offer or contract and must not be relied upon as statements or representations of fact. Purchasers/Tenants must satisfy themselves by inspection or otherwise as to their correctness.