



Four Bedroom Detached House

Copse Close, Camberley, Surrey, GU15 2BW

Price: £800,000

- Four Bedrooms
- Detached
- No Onward Chain
- 0.30 Acre Plot
- Potential to Extend STPP
- Double Garage & Driveway
- Close to Prior Heath School
- EPC : C (74)



Description

A superb four bedroom detached house, situated within close proximity of Prior Heath Infant School, on a south facing plot of approx 0.30 acre at the end of a cul-de-sac.

This property is offered for sale with no onward chain.

The ground floor is accessed via a spacious hallway which leads to a study, kitchen/breakfast room and a generous lounge/dining room. There is also a downstairs cloakroom and utility room.

On the first floor there are four well proportioned bedrooms, a family bathroom and en suite shower room to the main bedroom!

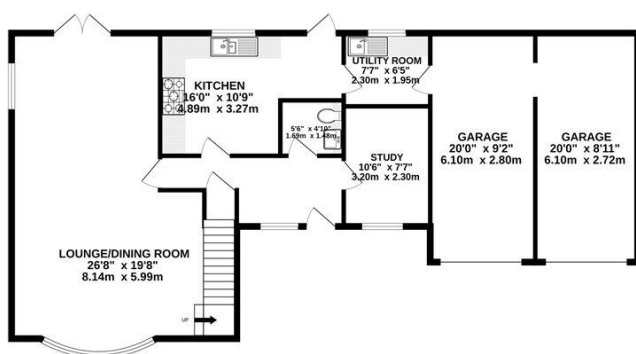
Outside

The property is approached via a generous driveway offering extensive parking which leads to a double garage.

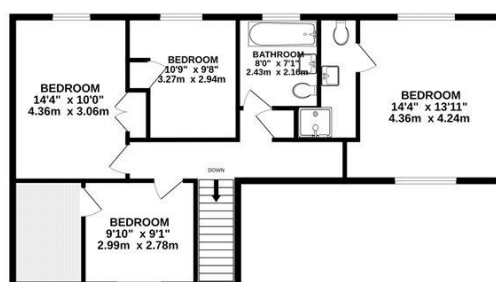
The rear garden measures approx 120ft in depth and is extremely private. There is potential to extend subject to obtaining the necessary consents.

Floorplan

GROUND FLOOR



1ST FLOOR



Whilst every attempt has been made to ensure the accuracy of the floorplan contained here, measurements of doors, windows, rooms and any other items are approximate and no responsibility is taken for any error, omission or mis-statement. This plan is for illustrative purposes only and should be used as such by any prospective purchaser. The services, systems and appliances shown have not been tested and no guarantee as to their operability or efficiency can be given.
Made with Metropix ©2022



TO ARRANGE A VIEWING PLEASE CONTACT:

Tel: 01276 685544 or Email:

camberley@bridges.co.uk



Important Notice - These particulars are set out as a general outline only for the guidance of intended purchasers/tenants and do not form part of any offer or contract and must not be relied upon as statements or representations of fact. Purchasers/Tenants must satisfy themselves by inspection or otherwise as to their correctness.