



Four Bedroom Detached House

Lynams, Church Crookham, Fleet, GU52 6DQ

Price: £727,500

- Four Bedrooms
- Detached Family Home
- South Facing Garden
- Cul-de-Sac Location
- Zebon Copse
- No Onward Chain
- Viewings Advised
- EPC : D (63)



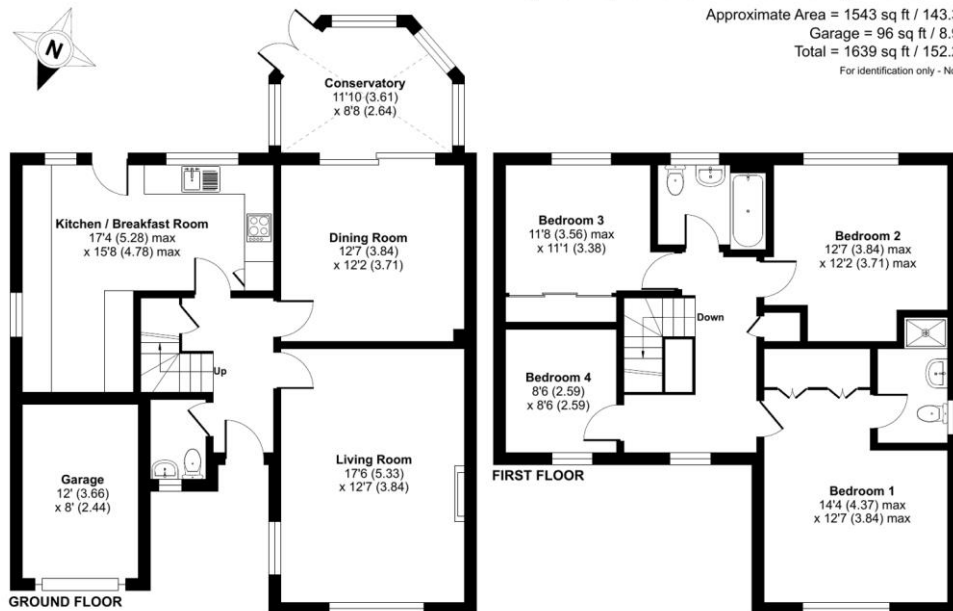
Description

Nestled within a sought after and peaceful cul-de-sac in Zebon Copse, a spacious four bedroom detached family home is offered to the market with no onward chain. The accommodation comprises an entrance Hall, cloakroom, living room, dining room, kitchen/breakfast room, conservatory and an integral garage all on the ground floor. Whilst the first floor offers four well proportioned bedrooms, one with an en suite, and a family bathroom. Viewings are highly recommended and strictly by appointment only.

Outside

The property benefits from driveway parking and access to the garage via an 'up and over' door. A side gate leads to the south facing rear garden which is mainly laid to lawn with a patio seating area.

Floorplan



Lynams, Church Crookham, Fleet, GU52

Approximate Area = 1543 sq ft / 143.3 sq m
 Garage = 96 sq ft / 8.9 sq m
 Total = 1639 sq ft / 152.2 sq m
 For identification only - Not to scale



Floor plan produced in accordance with RICS Property Measurement Standards incorporating International Property Measurement Standards (IPMS2 Residential). ©vrvhccom 2024. Produced for Bridges Estate Agents. REF: 1188382



To arrange a viewing please contact:

Tel: 01252 361550

Email: info@bridges.co.uk

Important Notice - These particulars are set out as a general outline only for the guidance of intended purchasers and do not form part of any offer or contract and must not be relied upon as statements or representations of fact. Purchasers must satisfy themselves by inspection or otherwise as to their correctness.