



Four Bedroom Semi-Detached House

Beta Road, Farnborough, GU14 8PH

Price: £485,000

- Four Bedrooms Semi-Detached House
- No Onward Chain
- Ample Parking
- Extended Family Home
- Bathroom and Shower Room
- Close to Schools and Amenities
- South Westerly Aspect Garden
- EPC: D (55)



Description

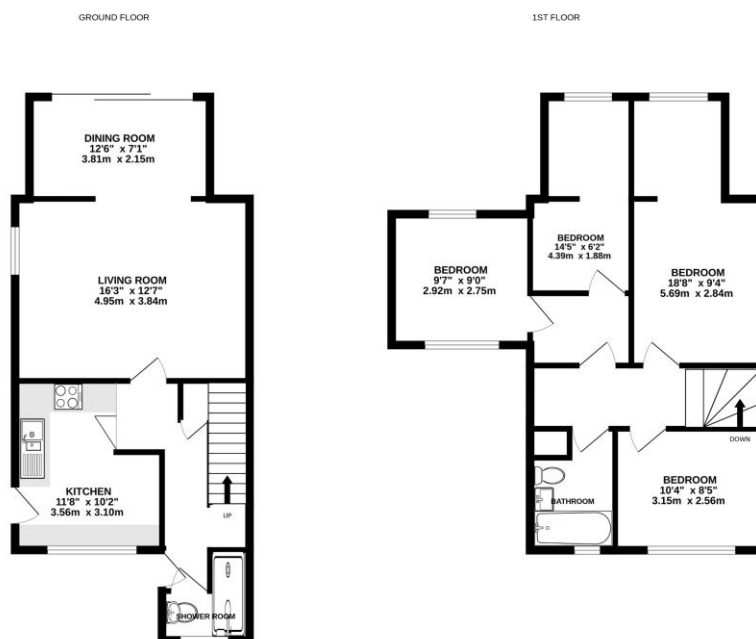
Bridges are delighted to present this impressive four bedroom semi-detached home, ideally located in the sought-after West Heath area of Farnborough and offered to the market with no onward chain. Thoughtfully extended, the property boasts a generous additional reception room on the ground floor and enhanced space to two of the upstairs bedrooms, making it perfect for modern family living. Upon entering, you are greeted by a spacious kitchen, an impressive living room, and a bright, airy dining room. A convenient ground floor shower room adds further practicality. Upstairs, the home continues to impress with four well-proportioned double bedrooms and a stylish family bathroom. The standout dual-aspect principal bedroom enjoys an abundance of natural light, creating a wonderfully open and inviting feel. Externally, the property benefits from a generous carport, garage, and ample driveway parking. To the rear, the south-westerly facing garden is a true highlight, featuring a lovely patio area accessed via the dining room doors, perfect for entertaining or relaxing, while the expansive lawn provides plenty of outdoor space for families to enjoy.

Outside

Not only is this exceptional property just a stone's throw from a variety of convenient local amenities, but it also enjoys a superb position close to highly regarded schools—making it an ideal family home. The idyllic rear garden is mainly laid to lawn and thoughtfully enhanced with blossoming flower beds and mature greenery, offering a peaceful and attractive outdoor retreat.

To view the Material Information Certificate for this property please click [Here](#) or contact us to request a copy.

Floorplan



While every attempt has been made to ensure the accuracy of the floorplan contained here, measurements of doors, windows, rooms and any other items are approximate and no responsibility is taken for any error, omission or mis-statement. This plan is for illustrative purposes only and should be used as such by any prospective purchaser. The services, systems and appliances shown have not been tested and no guarantee as to their operability or efficiency can be given.
Made with Metropac C2024



TO ARRANGE A VIEWING PLEASE CONTACT:
Tel: **01252 361550** or Email: **info@bridges.co.uk**



Important Notice - These particulars are set out as a general outline only for the guidance of intended purchasers/tenants and do not form part of any offer or contract and must not be relied upon as statements or representations of fact. Purchasers/Tenants must satisfy themselves by inspection or otherwise as to their correctness.