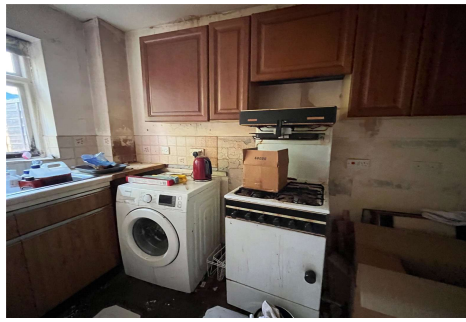


One Bedroom Terraced House

Wellesley Close, Ash Vale, Surrey, GU12 5SP

Guide Price: £155,000

- One Double Bedroom
- For Sale by Modern Auction - T&C's Apply
- Subject to Reservation Price
- Buyers Fees Apply
- Private Garden and Garage
- Needing Modernisation
- No Chain Investment Opportunity
- EPC: E (46)



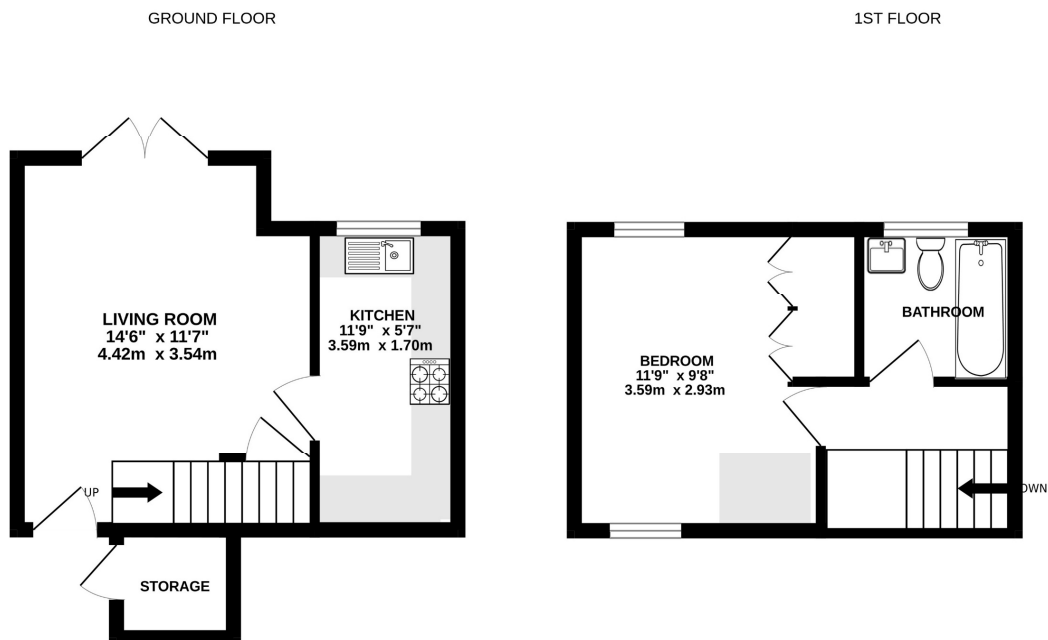
Description

This one bedroom freehold house in need of extensive modernisation throughout is offered to the market with no onward chain and is an incredible investment opportunity. The ground floor comprises of a kitchen and living room which leads out onto the private garden and garage. Upstairs is a bathroom and bedroom with built in storage.

Outside

Outside boasts a garage and a private and enclosed garden. The garden also offers direct access into the garage.

Floorplan



Whilst every attempt has been made to ensure the accuracy of the floorplan contained here, measurements of doors, windows, rooms and any other items are approximate and no responsibility is taken for any error, omission or mis-statement. This plan is for illustrative purposes only and should be used as such by any prospective purchaser. The services, systems and appliances shown have not been tested and no guarantee as to their operability or efficiency can be given.
Made with Metropix ©2024



TO ARRANGE A VIEWING PLEASE CONTACT:
Tel: **01252 361550** or Email: **info@bridges.co.uk**



Important Notice - These particulars are set out as a general outline only for the guidance of intended purchasers/tenants and do not form part of any offer or contract and must not be relied upon as statements or representations of fact. Purchasers/Tenants must satisfy themselves by inspection or otherwise as to their correctness.