

Four Bedroom Semi-Detached House Cotswold Close, Farnborough, Hampshire, GU14 9ET

Offers in excess of: £475,000

- Four Double Bedrooms
- Driveway Parking
- Garage
- Semi-Detached Family Home
- Spacious Layout
- Modern Kitchen/Breakfast Room
- Sunny Aspect Garden
- EPC : C (75) TBC



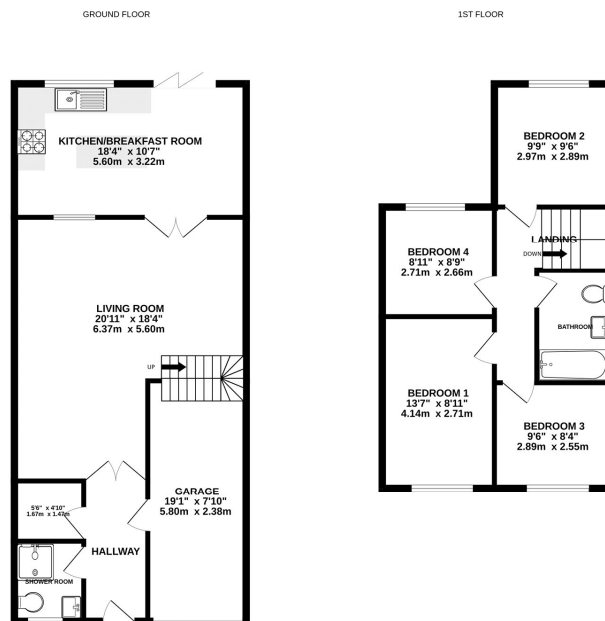
Description

A generous extended family home situated in the popular Westfields development in Farnborough, just a short walk away from a great selection of schools, such as Manor Infants and Juniors, Cove School and Fernhill School. Upon entering the property, you are greeted by a generous entrance hallway providing access to the shower room, garage, boot room, also leading through to a spacious lounge/dining room and a kitchen/breakfast room with bi-fold doors out to the rear garden. Upstairs, the property offers four double bedrooms and a good size family bathroom, the principal bedroom benefits from built in wardrobes and ample storage space. Cotswold Close is ideally situated and within easy access to an array of local amenities, easy access to the M3, excellent bus links and conveniently positioned for access to Farnborough town centre, main train station for access into London Waterloo in under 40 minutes as well as close proximity to the popular Hawley Lakes. Viewings are highly recommended and can be booked in by the Bridges team.

Outside

Externally the property benefits from driveway parking and side access to an enclosed rear garden. The rear garden is of westerly aspect with a patio area either side of a good sized lawn bordered by flower beds which is the home to some colourful shrubs, plants and bushes.

Floorplan



Whilst every attempt has been made to ensure the accuracy of the floorplan contained herein, measurements of walls, windows, doors and other parts herein are approximate and are not intended to be used for any legal, planning or other purposes. This plan is for illustrative purposes only and should be used as a guide only for information purposes. The services, fixtures and appliances shown have not been tested and no guarantee is given as to their operability or efficiency. See page 10 for more information.
Made with Netplan 12/2024



To arrange a viewing please contact:

Tel: 01252 361550

Email: info@bridges.co.uk

Important Notice - These particulars are set out as a general outline only for the guidance of intended purchasers and do not form part of any offer or contract and must not be relied upon as statements or representations of fact. Purchasers must satisfy themselves by inspection or otherwise as to their correctness.