



THE RIDINGS | FRIMLEY


**Platinum
Homes**
BY BRIDGES



The Property

A stunning five bedroom detached family home offered for sale with no onward chain and situated on a substantial plot in a sought after location.

The Ridings is within walking distance of Ravenscote and Tomlinscote schools, Pine Ridge Golf Course and both Lightwater Country Park and St. Catherines Wood.

The accommodation comprises a wide entrance hallway with a downstairs cloakroom, a spacious open plan kitchen/dining room opening round to the living room, a separate utility room and a family room all on the ground floor. To the first floor, the property benefits from a generous principle bedroom offering views of the garden, an en suite shower room and a dressing area, all of which is accessed via a connected study area, whilst there are also a further four double bedrooms with a family bathroom off the landing.

Viewings are highly recommended to appreciate all the work and attention to detail that has gone into finishing this beautiful home.

Outside

There is ample off street parking on the driveway plus a double garage. The front garden is mainly laid to lawn but has been finished off with some decorative plants and shrubs. There are also views out onto a wooded copse.

The rear garden is a huge feature of this property, offering a high degree of privacy whilst further featuring an extensive lawn area and a substantial Indian Sandstone patio area, all set within a plot measuring approximately 0.21 of an acre.





Features

- Five Bedrooms
- Detached Home
- Completely Refurbished
- Approximately 0.21 of an Acre Plot
- Sought After Location
- Close to Great Schools
- No Onward Chain
- EPC : D (59)
- Council Tax Band : G

Contact

Philip Gascoyne

pgascoyne@platinumbybridges.co.uk

01252 975501


**Platinum
Homes**
BY BRIDGES





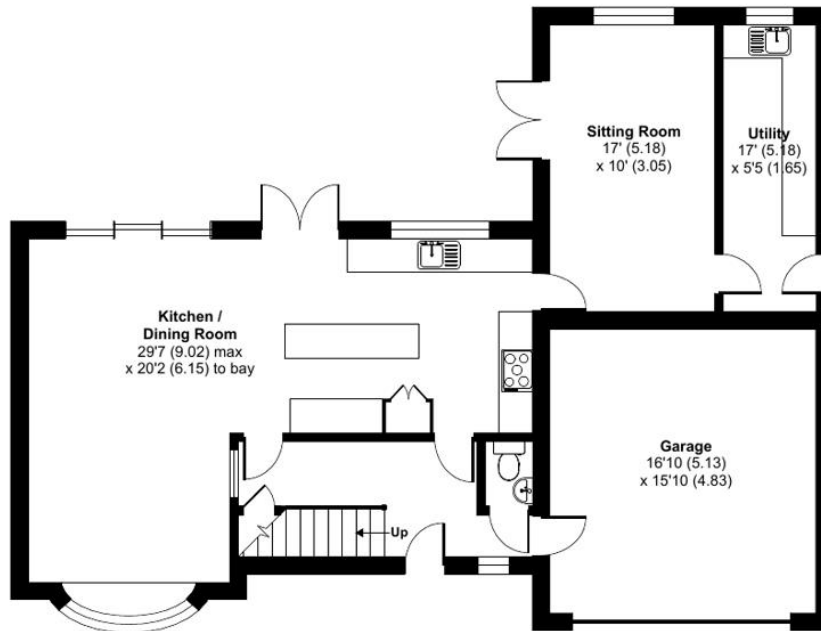
The Ridings, GU16

Approximate Area = 2142 sq ft / 199 sq m

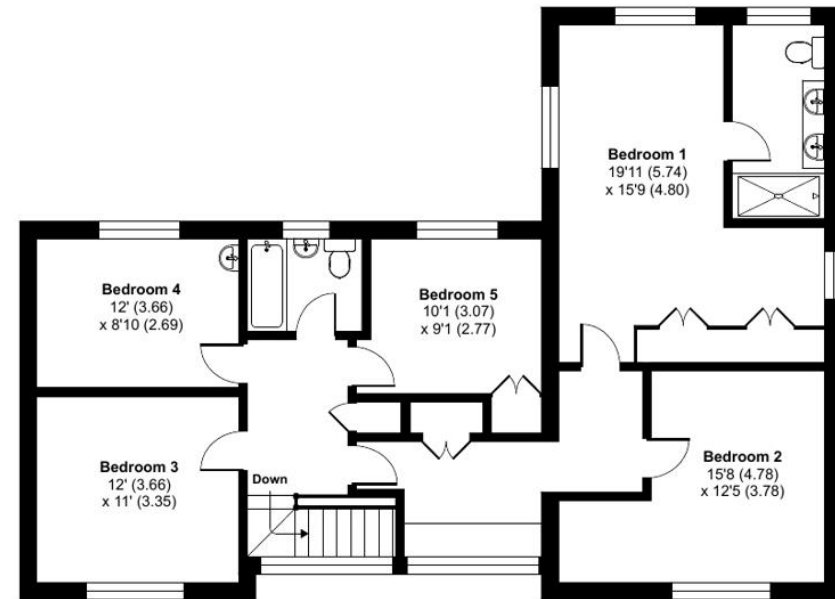
Garage = 317 sq ft / 29.4 sq m

Total = 2459 sq ft / 228.4 sq m

For identification only - Not to scale



GROUND FLOOR



FIRST FLOOR



Floor plan produced in accordance with RICS Property Measurement Standards incorporating International Property Measurement Standards (IPMS2 Residential). © nchecon 2024. Produced for Bridges Estate Agents Ltd (Platinum Homes). REF: 1088477



Important Notice - These particulars are set out as a general outline only for the guidance of intended purchasers and do not form part of any offer or contract and must not be relied upon as statements or representations of fact. Purchasers must satisfy themselves by inspection or otherwise as to their correctness.

