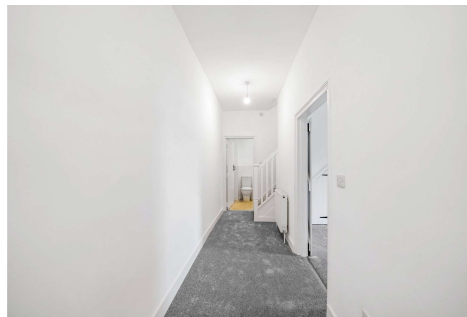
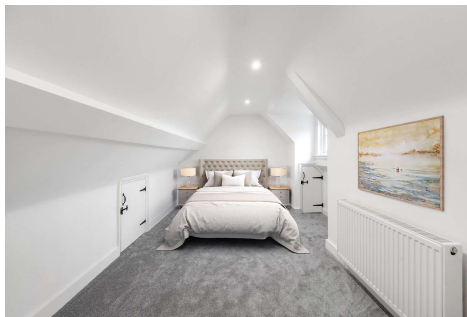


## Two Bedroom Terraced House

**Hartford Bridge, Hartley Wintney, Hook, Hampshire, RG27 8AE**

**Price: £350,000**

- Two Double Bedrooms
- Three Storey Character Property
- Refurbished Throughout
- Recently Fitted Kitchen and Bathrooms
- Private Secure Courtyard
- Off Road Parking
- No Onward Chain
- EPC: D (63)



## Description

This three-story, freehold house is situated in a private gated courtyard just a short distance from the heart of Hartley Wintney village. The property, offered with vacant possession, has undergone a comprehensive refurbishment and modernisation - ensuring it is a move-in ready home with peace of mind. The ground floor features a cloakroom, an open plan living room with wooden flooring, and a recently fitted kitchen with matching worktops and upstands. The first floor comprises a bright double bedroom with ample storage and a walk-in wardrobe, along with a separate fitted shower room boasting a spacious shower cubicle. On the top floor, there is another double bedroom with additional eaves storage cupboards - alongside a fitted en-suite bathroom that benefits from natural light through a skylight window. Additional perks of this property include external storage for bicycles, parking space for two vehicles, and an upgraded central heating system with radiators.

## Outside

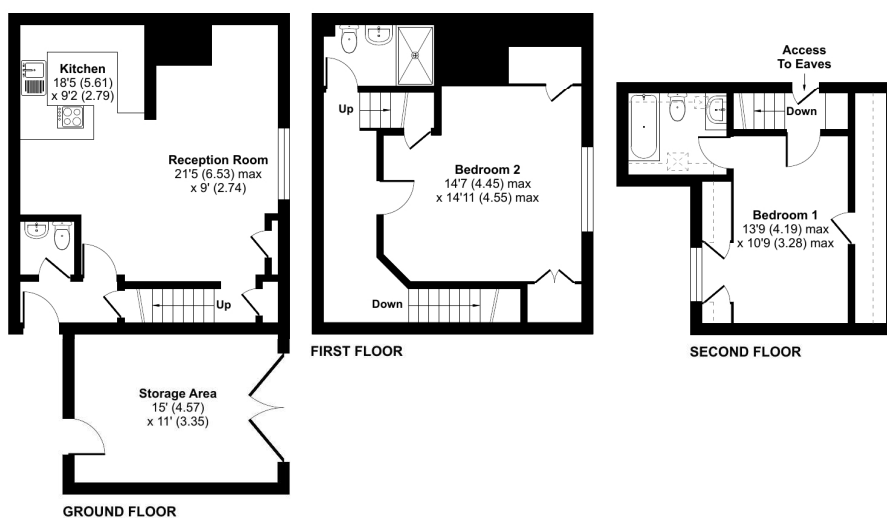
The outside space provides parking within a private gated courtyard. There is a covered area with access via a wooden door, which provides external storage ideal for bicycle storage.

## Floorplan

Denotes restricted head height

### The Courtyard Hartford Bridge, Hook, RG27

Approximate Area = 1030 sq ft / 95.7 sq m  
Limited Use Area(s) = 64 sq ft / 5.9 sq m  
Storage Area = 165 sq ft / 15.3 sq m  
Total = 1259 sq ft / 116.9 sq m  
For identification only - Not to scale



Floor plan produced in accordance with RICS Property Measurement Standards incorporating International Property Measurement Standards (IPMS2 Residential). © nlschem 2023. Produced for Bridges Estate Agents. REF: 1051698



To arrange a viewing please contact:

Tel: 01256 769999

Email: [info@bridges.co.uk](mailto:info@bridges.co.uk)

Important Notice - These particulars are set out as a general outline only for the guidance of intended purchasers and do not form part of any offer or contract and must not be relied upon as statements or representations of fact. Purchasers must satisfy themselves by inspection or otherwise as to their correctness.