



Two Bedroom Apartment

John Hunt Drive, Basingstoke, Hampshire, RG24 9TX

Offers in excess of: £200,000

- Two Double Bedrooms
- Second Floor Apartment
- Spacious Living Room
- Balcony
- Allocated Parking
- Everest Park Development
- Estimated Rental Price: £1200pcm
- EPC: B (82)



Description

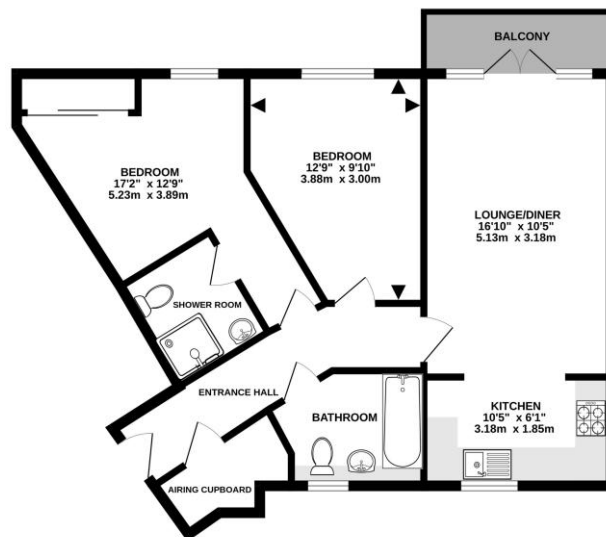
Bridges Estate Agents are delighted to present this spacious two bedroom, two bathroom apartment situated in the sought after Everest Park development. Located on the second floor, this well appointed apartment features an entrance hall with a large airing cupboard for ample storage, a fully tiled three piece bathroom, and a principal bedroom with a built in wardrobe and en suite. The second double bedroom provides additional flexibility, while the expansive living room opens into a modern kitchen. Completing the home, a private balcony offers a perfect spot to enjoy some outdoor space.

Outside

Externally the property features allocated parking and visitor parking. Everest Park is located to the north of Basingstoke's town centre. There is a wide range of shopping and recreational facilities as well as transport links, including a bus station and mainline railway station, which is well served with regular commuter services to London Waterloo in approximately 47 minutes. The M3 motorway runs just south of Basingstoke with access to London and The South. Closer by there is a spacious supermarket, convenience store and good bus links around the town as well as the local primary and secondary schools.

Floorplan

SECOND FLOOR



Whilst every attempt has been made to ensure the accuracy of the floorplan contained herein, measurements of doors, windows, rooms and any other items are approximate and no responsibility is taken for any error, omission or misstatement. This plan is for illustrative purposes only and should be used as a guide to any prospective purchaser. The services, fixtures and fittings shown have not been tested and no guarantee as to their operation or efficiency can be given. Made with Metagage CS24



TO ARRANGE A VIEWING PLEASE CONTACT:
Tel: **01256 880001** or Email: **info@bridges.co.uk**



Important Notice - These particulars are set out as a general outline only for the guidance of intended purchasers/tenants and do not form part of any offer or contract and must not be relied upon as statements or representations of fact. Purchasers/Tenants must satisfy themselves by inspection or otherwise as to their correctness.