



One Bedroom Ground Floor Maisonette

Morval Close, Farnborough, Hampshire, GU14 0JF

Guide Price: £180,000

- One Double Bedroom
- Small Popular Development
- Ground Floor Maisonette
- Well Presented Throughout
- Living/Dining Room
- Modern Fitted Bathroom
- Modern Fitted Kitchen
- EPC: D (58)



Description

A well presented ground floor maisonette situated in a peaceful cul-de-sac in Farnborough offering a spacious double bedroom, generous lounge/diner and fitted kitchen.

The property is well located for easy access to local amenities, transport links, well regarded local schools and the popular Southwood Country Park with its lovely walks, children's play area and cafe.

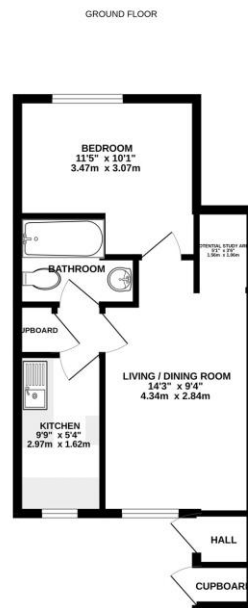
Benefitting from a low maintenance front garden area and both residents and visitors parking available.

IDEAL FIRST TIME BUY/INVESTMENT.

Outside

A small front garden, which is mainly laid to lawn with central path, plus a gravel area leading to the parking area, with further visitors parking.

Floorplan



While every attempt has been made to ensure the accuracy of the floorplan contained herein, measurements of floors, walls, doors and any other items are approximate and no responsibility is taken for any error or omission in this document. The user is to exercise caution, only use the floorplan as a guide to the general impression of the property. The fixtures, fittings and appliances shown have not been tested and no guarantee can be given regarding their operation or whether they are still available.



To arrange a viewing please contact:

Tel: 01252 361550

Email: info@bridges.co.uk

Important Notice - These particulars are set out as a general outline only for the guidance of intended purchasers and do not form part of any offer or contract and must not be relied upon as statements or representations of fact. Purchasers must satisfy themselves by inspection or otherwise as to their correctness.