



One Double Bedroom Retirement Apartment

St. Benedicts Close, Aldershot, GU11 3NJ

Price: £95,000

- One Double Bedroom
- Established Stunning Communal Gardens
- Tastefully Decorated Throughout
- Ground Floor
- Private Entrance and Parking
- Conveniently Located
- 24 Hour Careline
- EPC : D (63)



Description

A ground floor retirement maisonette, which has had many improvements throughout. Located in the ever popular 'Chasewater Court', a courtyard development for the over 60's. The property is located in a cul-de-sac location, walking distance to local amenities and good public transport links.

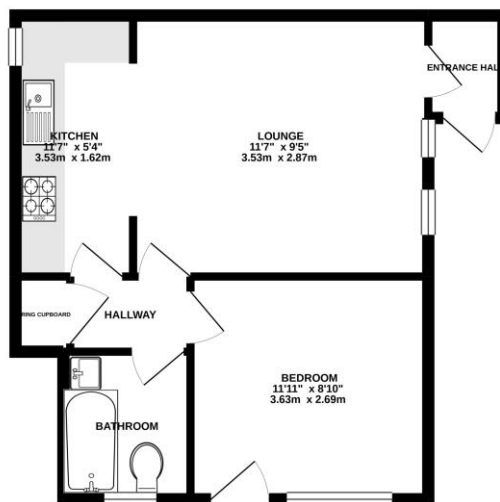
The accommodation boasts a light and airy entrance porch leading to the lounge, with an archway into the fully integrated kitchen with newly fitted oven, hob, electric heaters and water tank, a double principal bedroom, and a family bathroom.

Outside

The communal gardens at Chasewater Court offer the residents tranquil surroundings.

Floorplan

GROUND FLOOR



Whilst every attempt has been made to ensure the accuracy of the Plan(s) contained here, measurements of floor, window, ceiling and site areas have not been guaranteed and no responsibility is taken for any error, omission or mis-statement. The plan is for illustrative purposes only and does not constitute an offer of any prospective purchase. The services, fixtures and appliances shown have not been tested and no guarantee is to be given regarding its efficiency or performance.
Made with hdxpage 11/2011



To arrange a viewing please contact:

Tel: 01252 361550

Email: info@bridges.co.uk

Important Notice - These particulars are set out as a general outline only for the guidance of intended purchasers and do not form part of any offer or contract and must not be relied upon as statements or representations of fact. Purchasers must satisfy themselves by inspection or otherwise as to their correctness.