



Three Bedroom Semi-Detached Bungalow

Mytchett Road, Mytchett, Camberley, Surrey, GU16 6EG

Offers in excess of: £400,000

- No Chain
- Three Bedroom Semi Detached Bungalow
- Garage
- Driveway for Multiple Vehicles
- Opportunity to Develop Subject to Planning
- Walking Distance to Local Amenities
- Generous Plot
- EPC: E (54)



Description

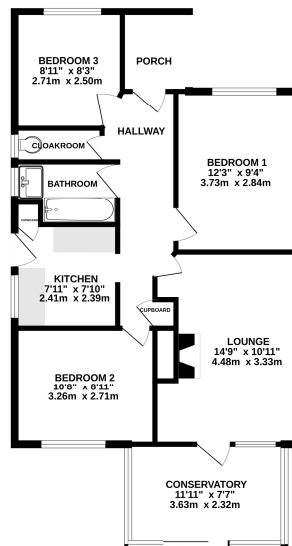
Located within the popular village of Mytchett, and only minutes' walk from the local amenities, is this three-bedroom, semi-detached bungalow. The bungalow boasts three bedrooms, a spacious living room with feature fireplace and a conservatory - providing pleasant views into the garden. In addition there is a bathroom suite, separate toilet and a kitchen with side door - leading out to the driveway. Due to the large plot, the property has excellent potential for development subject to planning.

Outside

Outside boasts a driveway for multiple vehicles, a garage and a large private rear garden.

Floorplan

GROUND FLOOR



While every attempt has been made to ensure the accuracy of the floorplan contained here, measurements of walls, windows, doors and any other items are approximate and are intended to assist in your general understanding of the property. The plan is not intended to be used as a basis for any prospective purchase. The services, systems and appliances shown have not been tested and its guarantee is to be held separately to the floorplan. Made with Metamax C2024



To arrange a viewing please contact:

Tel: 01252 361550

Email: info@bridges.co.uk

Important Notice - These particulars are set out as a general outline only for the guidance of intended purchasers and do not form part of any offer or contract and must not be relied upon as statements or representations of fact. Purchasers must satisfy themselves by inspection or otherwise as to their correctness.