

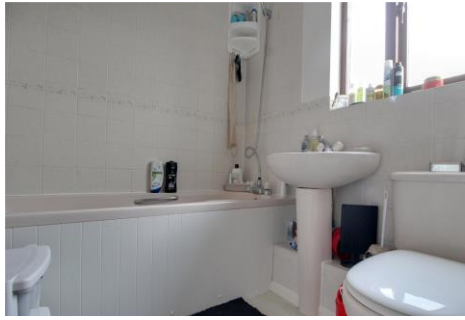


One Double Bedroom Maisonette

Wooland Court, Church Crookham, Fleet, Hampshire, GU52 6XS

Price: £200,000

- One Double Bedroom
- Maisonette
- Ground Floor
- Spacious Living
- Allocated Parking
- Zebon Copse Development
- External Storage
- EPC: TBC



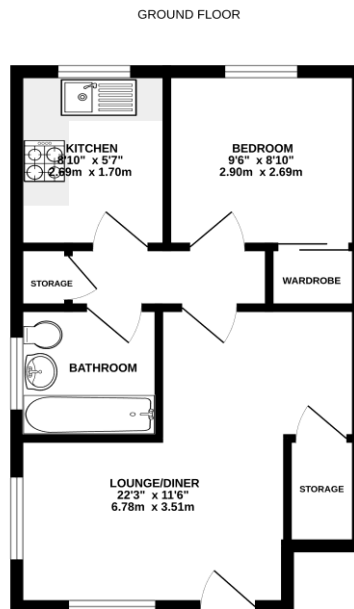
Description

This ground floor Maisonette offers a spacious Living/Dining room, kitchen with built in appliances, double bedroom and bathroom.

Outside

Located in the popular Zebon Copse development and backing onto a green space. This property also offers allocated parking and external storage.

Floorplan



Whilst every attempt has been made to ensure the accuracy of the floorplan contained herein, measurements of plans, windows, rooms and any other items are approximate and no responsibility is taken for any error, omission or mis-statement. This plan is for illustrative purposes only and should be used as such by any prospective purchaser. The position of doors and appliances shown have not been tested and no guarantee is given for the reliability of dimensions or any other data shown.
Made with Metrage 2.0.0.24



To arrange a viewing please contact:

Tel: 01252 361550

Email: info@bridges.co.uk

Important Notice - These particulars are set out as a general outline only for the guidance of intended purchasers and do not form part of any offer or contract and must not be relied upon as statements or representations of fact. Purchasers must satisfy themselves by inspection or otherwise as to their correctness.