



## One Double Bedroom Ground Floor Flat/Apartment

**Newfoundland Road, Deepcut, Camberley, Surrey, GU16 6SY**

Fixed Price: £56,250

- One Double Bedroom
- Ground Floor
- Executive Apartment
- Recently Constructed
- Fitted Kitchen
- Shared Ownership Options
- Allocated Parking Space
- EPC : B (82)



## Description

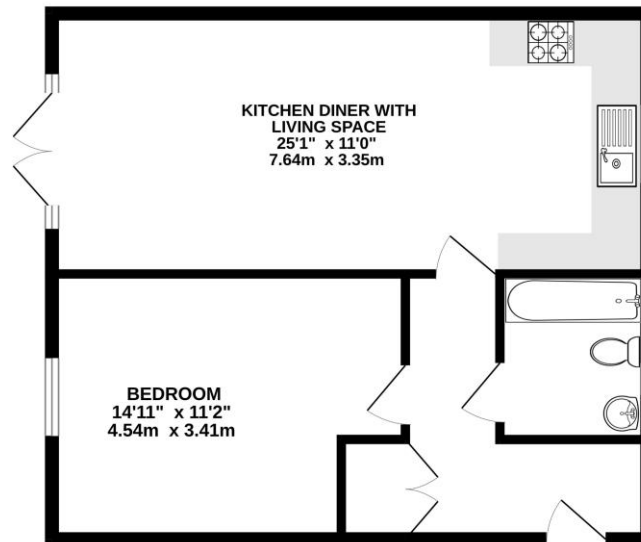
A recently constructed one bedroom ground floor shared ownership apartment located in the sought after Mindenhurst Development in Deepcut. The property has light and spacious accommodation and is offered to the market with no onward chain. The accommodation comprises of a spacious entrance hall with storage cupboard, front aspect living/dining room opening to the fitted kitchen, a double bedroom with fitted wardrobe and bathroom. An internal inspection is highly recommended to appreciate this apartment.

## Outside

Externally the property benefits from one allocated parking space.

## Floorplan

GROUND FLOOR



Whilst every attempt has been made to ensure the accuracy of the floorplan contained here, measurements of floors, walls, doors and any other items are approximate and no responsibility is taken for any error, omission or mis-statement. This plan is for illustrative purposes only and should be used as such by any prospective purchaser. The fixtures, systems and appliances shown have not been tested and no guarantee as to their quantity or efficiency can be given.  
Made with MapInfo 12.0.0.0



TO ARRANGE A VIEWING PLEASE CONTACT:  
Tel: **01252 361550** or Email: [info@bridges.co.uk](mailto:info@bridges.co.uk)



Important Notice - These particulars are set out as a general outline only for the guidance of intended purchasers/tenants and do not form part of any offer or contract and must not be relied upon as statements or representations of fact. Purchasers/Tenants must satisfy themselves by inspection or otherwise as to their correctness.